

| | | | |
|--|------------------------|---|-------------|
| WAAS CH 56416 W34A | APP CRS 339° | Rwy Idg TDZE 322 Apt Elev 341 | 5387 |
|--|------------------------|---|-------------|

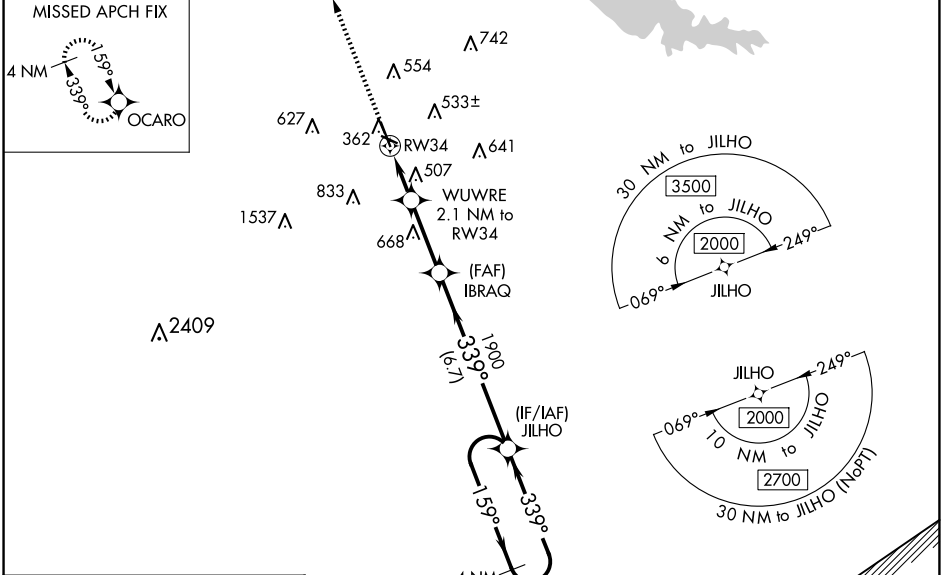
RNAV (GPS) RWY 34

HAWKINS FLD (HKS)

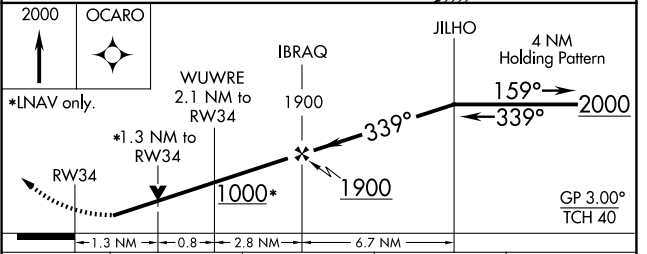
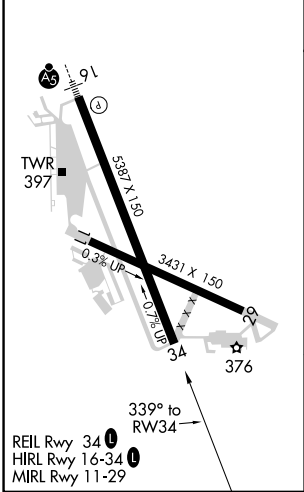
⚠ For uncompensated Baro-VNAV systems, LNAV/VNAV NA below -6°C (22°F) or above 54°C (130°F). DME/DME RNP-0.3 NA. Baro-VNAV and VDP NA when using Jackson-Medgar Wiley Evers Intl altimeter setting. When local altimeter setting not received, use Jackson-Medgar Wiley Evers Intl altimeter setting and increase all DA 19 feet and all MDA 20 feet. Increase LPV and LNAV/VNAV all Cats visibility ½ mile and Circling Cat C visibility ¼ mile. Rwy 34 helicopter visibility reduction below ¾ SM NA.

MISSED APPROACH:
Climb to 2000 direct OCARO and hold.

| | | | | | |
|------------------------|---|---|-------------------------------|---|-------------------------|
| ASOS 120.625 | JACKSON APP CON * 123.9 319.2 | HAWKINS TOWER * 119.65 (CTAF) 257.8 | GND CON 121.9 239.0 | CLNC DEL 121.9 (When twr closed) | UNICOM 122.95 |
|------------------------|---|---|-------------------------------|---|-------------------------|



| | |
|-----------------|-----------------|
| ELEV 341 | TDZE 322 |
|-----------------|-----------------|



| CATEGORY | A | B | C | D |
|-------------------|----------------------|----------------------|-------------------------|------------------------|
| LPV DA | | 588-¾ | 266 (300-¾) | |
| LNAV/VNAV DA | | 670-1½ | 348 (400-1½) | |
| LNAV MDA | 760-1 | 438 (500-1) | 760-1¾ | 438 (500-1¾) |
| C CIRCLING | 860-1 519 (600-1) | 880-1 539 (600-1) | 1140-2¼ 799 (800-2¼) | 1320-3 979 (1000-3) |

SC-4, 15 MAY 2025 to 12 JUN 2025

SC-4, 15 MAY 2025 to 12 JUN 2025