


WAAS CH 45818 W18A	APP CRS 180°	Rwy Ldg TDZE Apt Elev	5001 44 46
--	------------------------	-----------------------------	---------------------------------------

RNAV (GPS) RWY 18

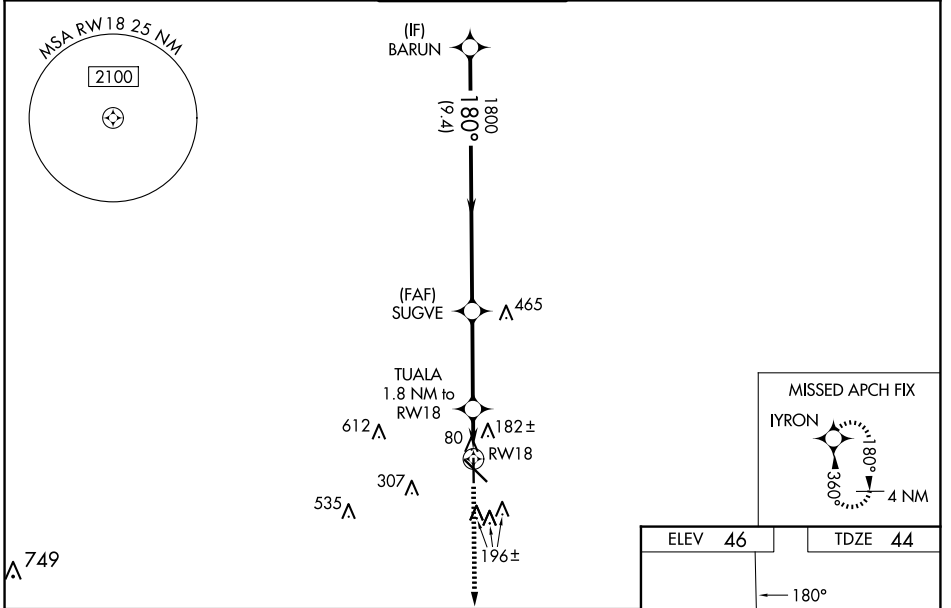
HAMMOND NORTHSHORE RGNL (HDC)

RNP APCH - GPS.

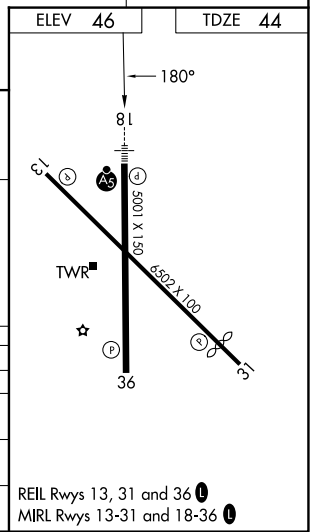
Baro-VNAV and VDP NA when using Louis Armstrong New Orleans Intl altimeter setting. For uncompensated Baro-VNAV systems, LNAV/VNAV NA below -15°C or above 54°C. When local altimeter setting not received, use Louis Armstrong New Orleans Intl altimeter setting and increase LPV DA to 339 feet; increase LNAV/VNAV DA to 555 feet and all visibilities ¼ SM. Increase all MDAs 100 feet and LNAV visibility Cat C/D ½ SM, and Circling visibility Cat C/D ½ SM. For inop ALS when using Louis Armstrong New Orleans Intl altimeter increase LPV all Cats visibility to ¾ SM; LNAV/VNAV all Cats visibility to 1 ¾ SM and LNAV Cats C/D visibility to 1 ¾ SM. For inop ALS increase LNAV/VNAV all Cats visibility to 1 ¼ SM and LNAV Cat C/D visibility to 1 ¼ SM.

MALSRS
 MISSED APPROACH: Climb to 2200 direct IYRON and hold.

ATIS 118.325	NEW ORLEANS APP CON 119.3 350.35	HAMMOND TOWER ★ 120.575 (CTAF) 	GND CON 119.85	CLNC DEL 119.3 (When twr closed)
------------------------	--	--	--------------------------	---




BARUN 1800 GP 3.00° TCH 52	SUGVE 1800 180°		TUALA 1.8 NM to RWY 18 182 ±	
	660 1.1 NM to RWY 18		RWY 18 196 ±	
9.4 NM		3.5 NM		0.7 NM
1.1 NM				
CATEGORY	A	B	C	D
LPV DA	250-½		206 (300-½)	
LNAV/VNAV DA	466-¾		422 (500-¾)	
LNAV MDA	460-½	416 (500-½)	460-¾	416 (500-¾)
CIRCLING	500-1	454 (500-1)	620-1½ 574 (600-1½)	920-2¾ 874 (900-2¾)



SC-4, 07 AUG 2025 to 04 SEP 2025

SC-4, 07 AUG 2025 to 04 SEP 2025

REIL Rwy 13, 31 and 36 
MIRL Rwy 13-31 and 18-36 