

| | | | |
|--|------------------------|-----------------------------|--|
| WAAS CH 77617 W09A | APP CRS 090° | Rwy Idg TDZE Apt Elev | 5998 96 112 |
|--|------------------------|-----------------------------|--|

RNAV (GPS) RWY 9

ESLER RGNL (E/SF)

RNP APCH-GPS

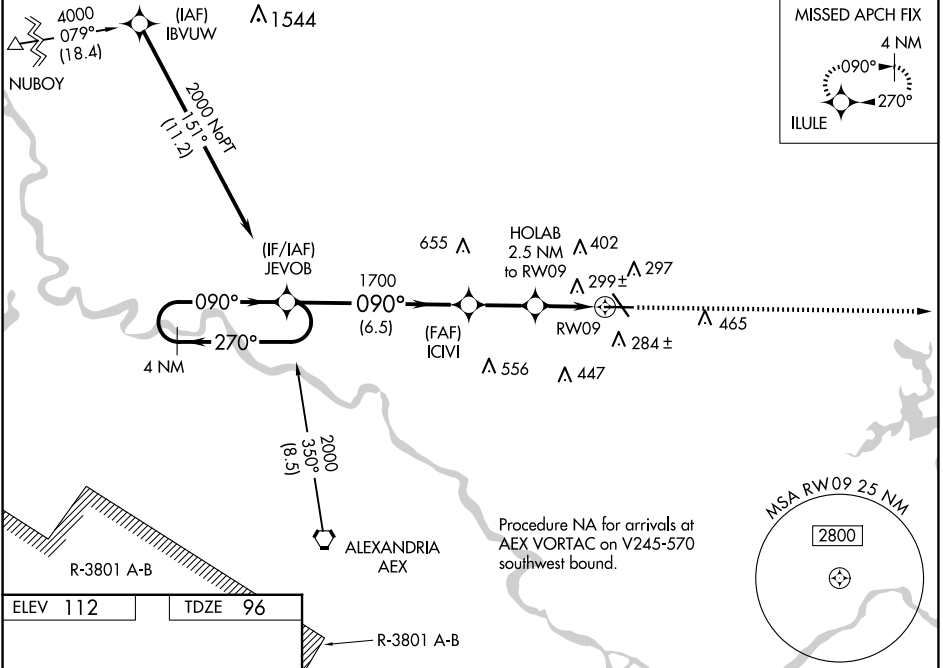
⚠ Circling Rwy 14, 32 NA at night. Baro-VNAV and VDP NA when using Alexandria Intl altimeter setting. For uncompensated Baro-VNAV systems, LNAV/VNAV NA below -6°C or above 54°C. When local altimeter setting not received, use Alexandria Intl altimeter setting; increase LPV DA to 331 feet; increase LNAV/VNAV DA to 644 feet and all visibility ¼ SM; increase all MDAs 40 feet and Circling visibility Cat D ¼.

MISSED APPROACH: Climb to 3000 direct ILULU and hold.

ESF ASOS
119.425

POLK APP CON
125.4 254.8

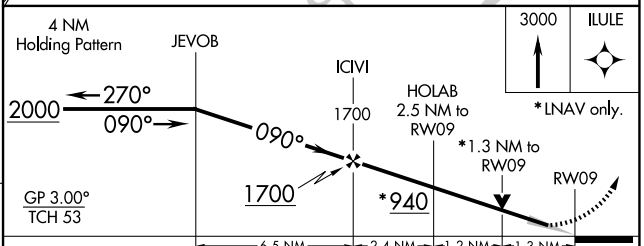
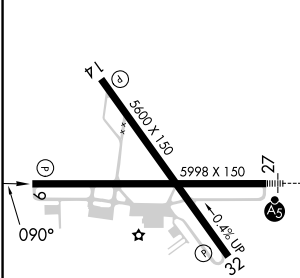
UNICOM
122.8 (CTAF) 0



SC-4, 15 MAY 2025 to 12 JUN 2025

SC-4, 15 MAY 2025 to 12 JUN 2025

| | |
|-----------------|----------------|
| ELEV 112 | TDZE 96 |
|-----------------|----------------|



| CATEGORY | A | B | C | D |
|--------------|-------|-------------|----------------------------|----------------------|
| LPV DA | | 296-3/4 | 200 (200-3/4) | |
| LNAV/VNAV DA | | 609-13/8 | 513 (500-13/8) | |
| LNAV MDA | 560-1 | 464 (500-1) | 560-13/8 | 464 (500-13/8) |
| CIRCLING | 600-1 | 488 (500-1) | 740-13/4 628 (700-13/4) | 760-2 648 (700-2) |

REIL Rws 9, 14 and 32 **Ⓛ**
MIRL Rwy 14-32 **Ⓛ**
HIRL Rwy 9-27 **Ⓛ**