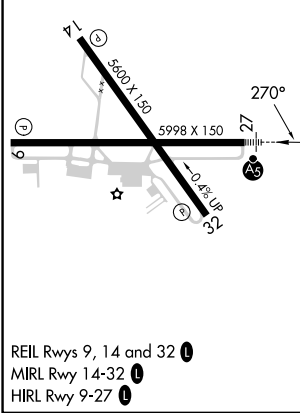
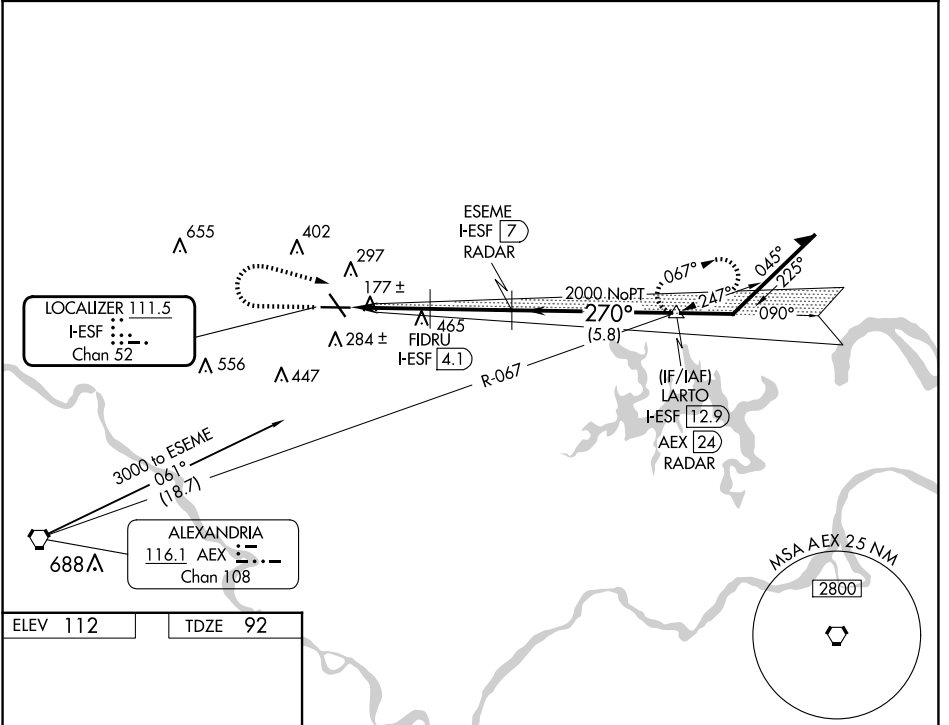


LOC I-ESF 111.5 Chan 52	APP CRS 270°	Rwy Idg 5998 TDZE 92 Apt Elev 112
---	------------------------	--

ILS or LOC/DME RWY 27

ESLER RGNL (E/SF)

RADAR or DME required.		MALSRS	MISSED APPROACH: Climb to 1500 then climbing right turn to 3000 on heading 120° and on AEX VORTAC R-067 to LARTO/AEX 24.1 DME/RADAR and hold.
<p>⚠ Circling Rwy 14, 32 NA at night. VDP NA with Alexandria Intl altimeter setting. When local altimeter not received, use Alexandria Intl altimeter setting and increase DA to 327 feet; increase all MDA to 40 feet and Circling visibility Cat D ¼ SM. For inop MALSRS, increase S-LOC 27 Cat C/D visibility to 1 SM.</p>			
ESF ASOS 119.425	POLK APP CON 125.4 254.8	UNICOM 122.8 (CTAF) 0	



ELEV 112	TDZE 92	<table border="1"> <tr> <td>1500</td> <td>3000</td> <td>AEX R-067</td> <td>LARTO AEX (24.1) RADAR</td> <td>ESEME I-ESF (7) RADAR</td> <td>Remain within 10 NM</td> </tr> </table>				1500	3000	AEX R-067	LARTO AEX (24.1) RADAR	ESEME I-ESF (7) RADAR	Remain within 10 NM
1500	3000	AEX R-067	LARTO AEX (24.1) RADAR	ESEME I-ESF (7) RADAR	Remain within 10 NM						
*LOC only.											
CATEGORY	A	B	C	D							
S-ILS 27	292-½		200 (200-½)								
S-LOC 27	440-½ 348 (400-½)		440-⅝		348 (400-⅝)						
CIRCLING	600-1 488 (500-1)		740-1¾ 628 (700-1¾)		760-2 648 (700-2)						

SC-4, 15 MAY 2025 to 12 JUN 2025

SC-4, 15 MAY 2025 to 12 JUN 2025