

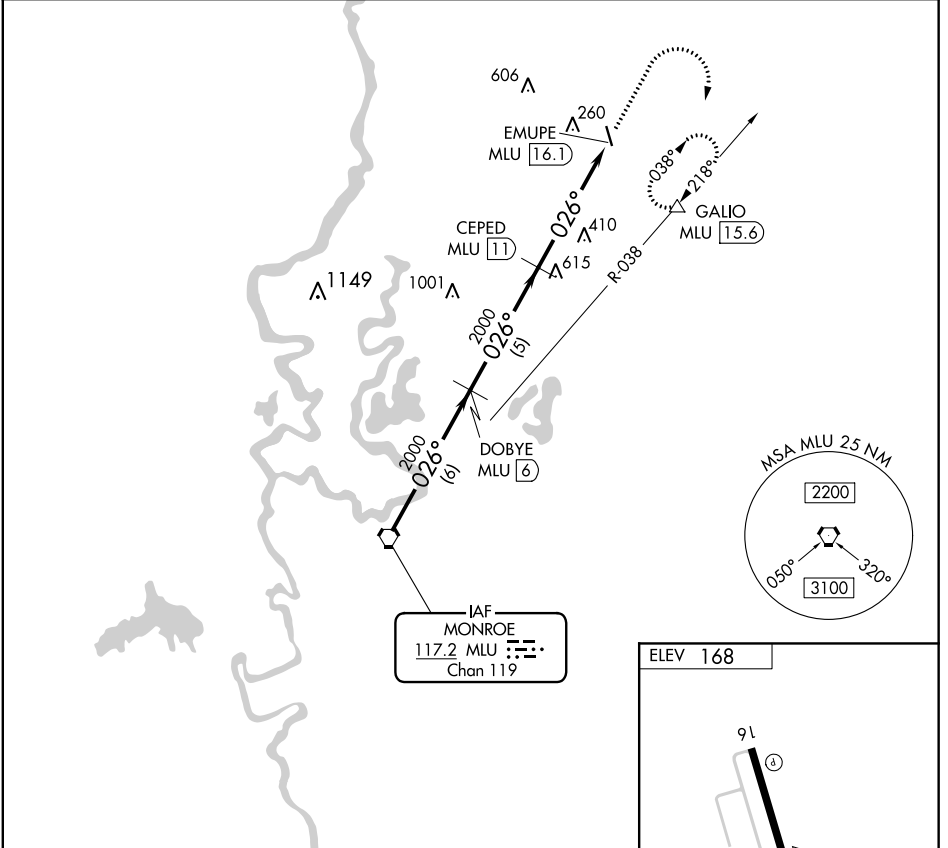
VORTAC MLU <b>117.2</b> Chan <b>119</b>	APP CRS <b>026°</b>	Rwy Idg TDZE Apt Elev <b>N/A</b> <b>N/A</b> <b>168</b>
---	------------------------	---

# VOR/DME-A

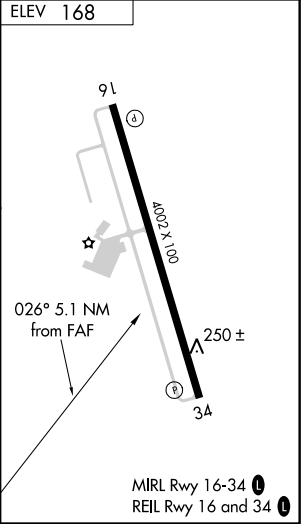
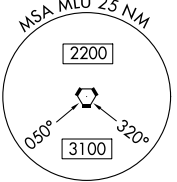
MOREHOUSE MEMORIAL (BQP)

<p><b>▽</b> When local altimeter setting not received, use Monroe altimeter setting and increase all MDA 60 feet and Cat C visibility ¼ mile.</p> <p><b>△</b> NA</p>	<p>MISSED APPROACH: Climb to 2000 then climbing right turn to 3000 via MLU R-038 to GALIO/MLU 15.6 DME and hold.</p>
--	--

AWOS-3PT <b>118,375</b>	MONROE APP CON* <b>126.9 307.9</b>	GCO <b>135,075</b>	UNICOM <b>122.8 (CTAF)</b>
----------------------------	---------------------------------------	-----------------------	-------------------------------



IAF  
MONROE  
117.2 MLU  
Chan 119



VORTAC	DOBYE MLU (6)	CEPED MLU (11)	2000	3000	GALIO
Procedure Turn NA	2000	2000	2000	EMUPE MLU (16.1)	△
	6 NM	5 NM	5.1 NM		
CATEGORY	A	B	C	D	
CIRCLING	720-1	552 (600-1)	780-1¼ 612 (700-1¼)	NA	

SC-4, 08 NOV 2018 to 06 DEC 2018

SC-4, 08 NOV 2018 to 06 DEC 2018