

WAAS CH <b>90308</b> <b>W34A</b>	APP CRS <b>341°</b>	Rwy ldg TDZE <b>168</b> Apt Elev <b>168</b>	<b>4002</b>
--	------------------------	---	-------------

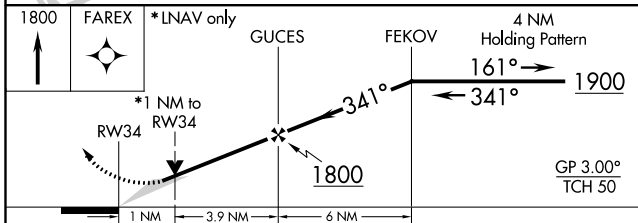
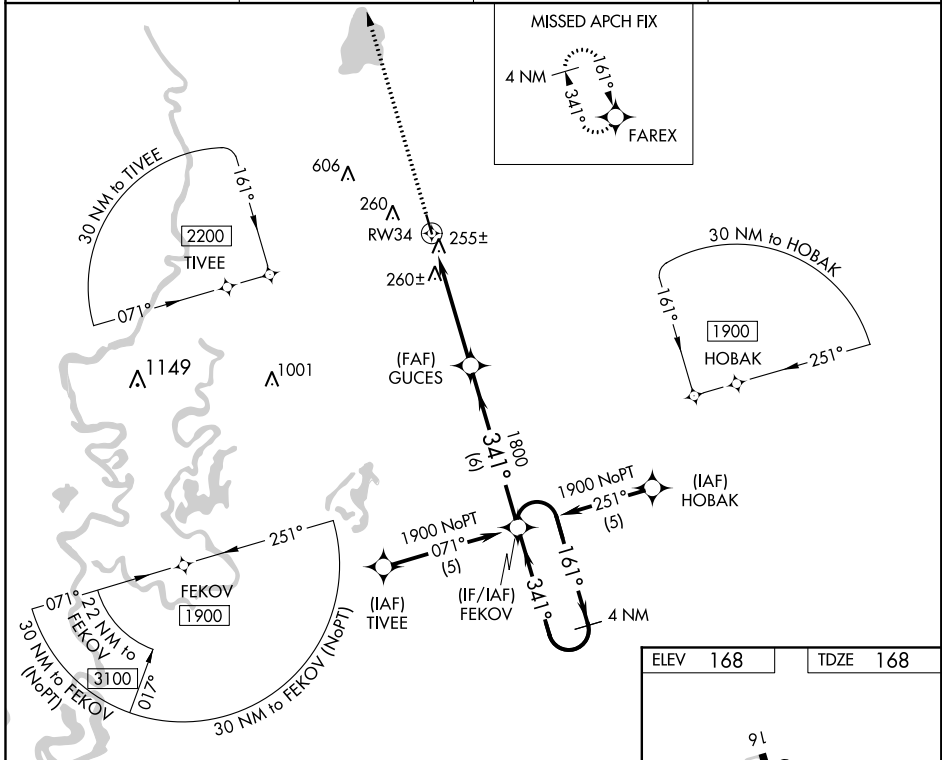
# RNAV (GPS) RWY 34

MOREHOUSE MEMORIAL (BQP)

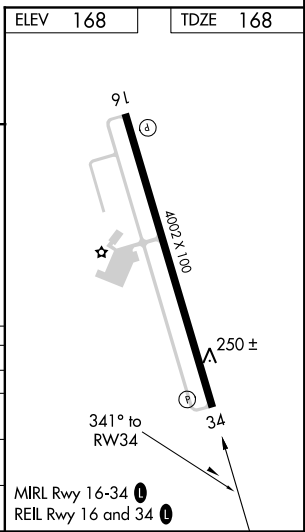
**Baro-VNAV NA** when using Monroe altimeter setting. For uncompensated Baro-VNAV systems, LNAV/VNAV NA below -1.5°C (5°F) or above 54°C (130°F). DME/DME RNP-0.3 NA. VDP NA when using Monroe altimeter setting. When local altimeter setting not received, use Monroe altimeter setting and increase all DA/MDA 60 feet and all visibilities ¼ mile.

**MISSED APPROACH:** Climb to 1800 direct FAREX and hold.

AWOS-3PT <b>118.375</b>	MONROE APP CON* <b>126.9 307.9</b>	GCO <b>135.075</b>	UNICOM <b>122.8 (CTAF) 0</b>
----------------------------	---------------------------------------	-----------------------	---------------------------------



CATEGORY	A	B	C	D
LPV DA	508-1¼	340 (400-1¼)		NA
LNAV/VNAV DA	551-1¼	383 (400-1¼)		NA
LNAV MDA	520-1	352 (400-1)		NA
CIRCLING	560-1 392 (400-1)	620-1 452 (500-1)	780-1¼ 612 (700-1¼)	NA



SC-4, 21 JUN 2018 to 19 JUL 2018

SC-4, 21 JUN 2018 to 19 JUL 2018