

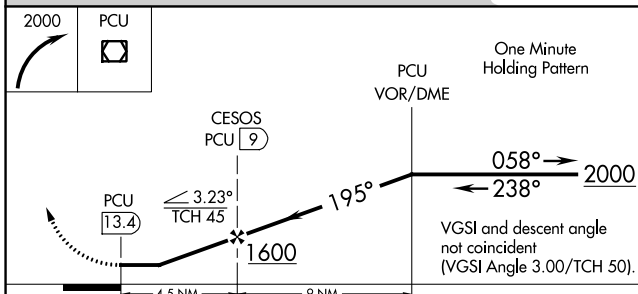
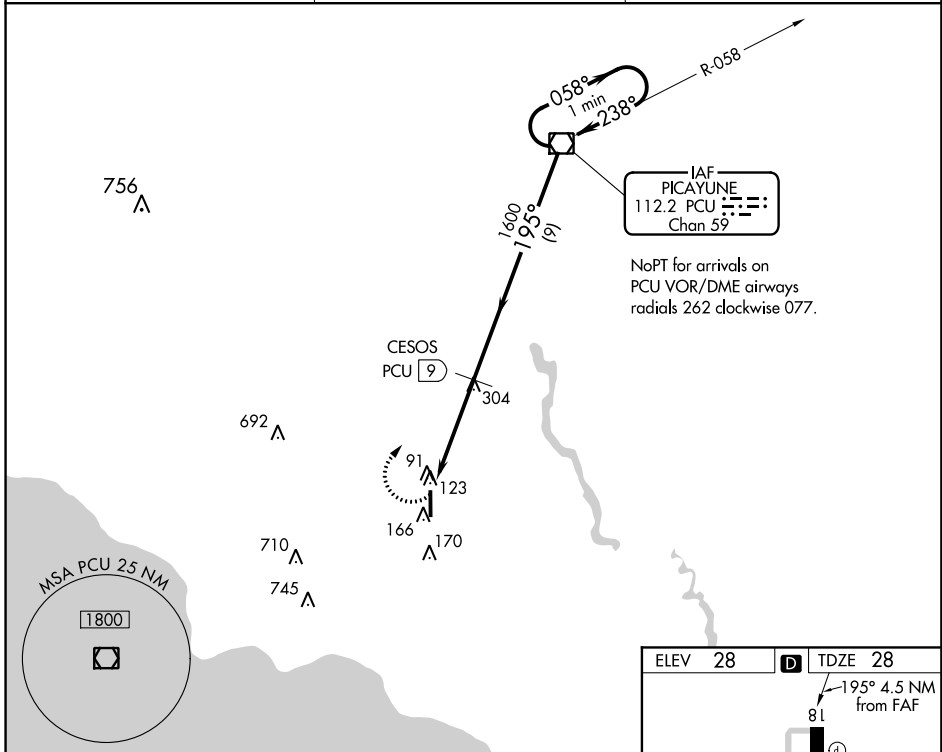
VOR/DME PCU 112.2 Chan 59	APP CRS 195°	Rwy Idg 4058 TDZE 28 Apt Elev 28
---	------------------------	---

VOR/DME RWY 18

SLIDELL (ASD)

<p>▼ Night landing Rwy 18 NA. ▲ NA Helicopter visibility reduction below 1 SM NA.</p>	<p>MISSED APPROACH: Climbing right turn to 2000 direct PCU VOR/DME and hold.</p>
---	--

ASOS 132.475	NEW ORLEANS APP CON 133.15 290.3	UNICOM 122.8 (CTAF) ①
------------------------	--	--



CATEGORY	A	B	C	D
S-18	460-1	432 (500-1)	460-1¼ 432 (500-1¼)	NA
CIRCLING	480-1	452 (500-1)	480-1½ 452 (500-1½)	NA

SC-4, 08 NOV 2018 to 06 DEC 2018

SC-4, 08 NOV 2018 to 06 DEC 2018