

WAAS CH <b>40301</b> <b>W35A</b>	APP CRS <b>348°</b>	Rwy Idg TDZE <b>21</b> Apt Elev <b>24</b>	<b>8002</b>
--	------------------------	---	-------------

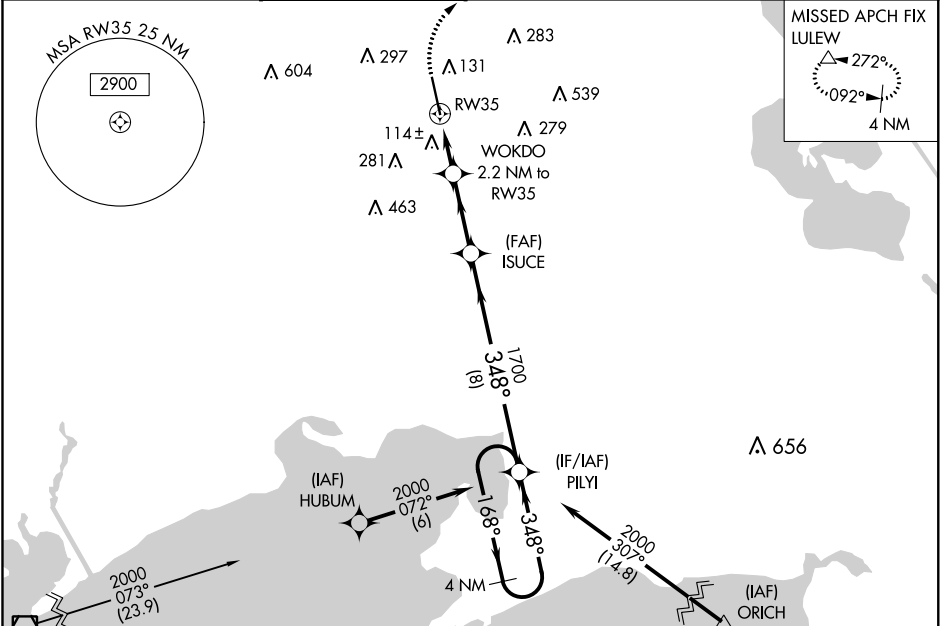
# RNAV (GPS) RWY 35

ACADIANA RGNL (A.R.A)

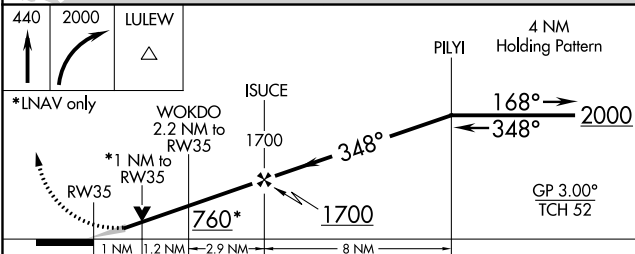
**▽** For uncompensated Baro-VNAV systems, LNAV/VNAV NA below -3°C (27°F) or above 54°C (130°F). DME/DME RNP-0.3 NA.  
For inop ALS, increase LNAV/VNAV all Cats visibility to 7/5 SM and LNAV Cats C/D visibility to 1 SM. Circling NA to Rwy's 17W and 35W.

**MALS** MISSED APPROACH: Climb to 440 then climbing right turn to 2000 direct LULEW and hold.

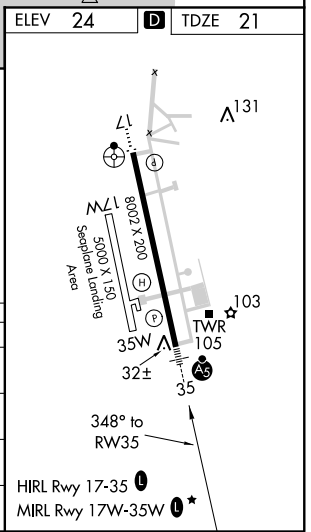
ASOS <b>133.325</b>	LAFAYETTE APP CON * <b>121.1 268.7</b>	ACADIANA TOWER * <b>125.0 (CTAF) 0 239.3</b>	GND CON <b>121.7</b>	CLNC DEL <b>121.7</b> <b>118.05</b> (when twr closed)	UNICOM <b>122.95</b>	<b>0 *</b> <b>122.7</b>
------------------------	---	---	-------------------------	---	-------------------------	----------------------------



ELEV <b>24</b>	<b>D</b>	TDZE <b>21</b>
----------------	----------	----------------



CATEGORY	A	B	C	D
LPV DA		221-1/2	200 (200-1/2)	
LNAV/DA		303-1/2	282 (300-1/2)	
LNAV MDA	380-1/2	359 (400-1/2)	380-3/4	359 (400-3/4)
<b>C</b> CIRCLING	440-1 416 (500-1)	480-1 456 (500-1)	600-1 1/2 576 (600-1/2)	680-2 656 (700-2)



SC-4, 07 DEC 2017 to 04 JAN 2018

SC-4, 07 DEC 2017 to 04 JAN 2018