

LOC/DME I-ARA <b>108.9</b> Chan <b>26</b>	APP CRS <b>348°</b>	Rwy Idg <b>8002</b> TDZE <b>21</b> Apt Elev <b>24</b>
---	------------------------	---

# ILS or LOC RWY 35

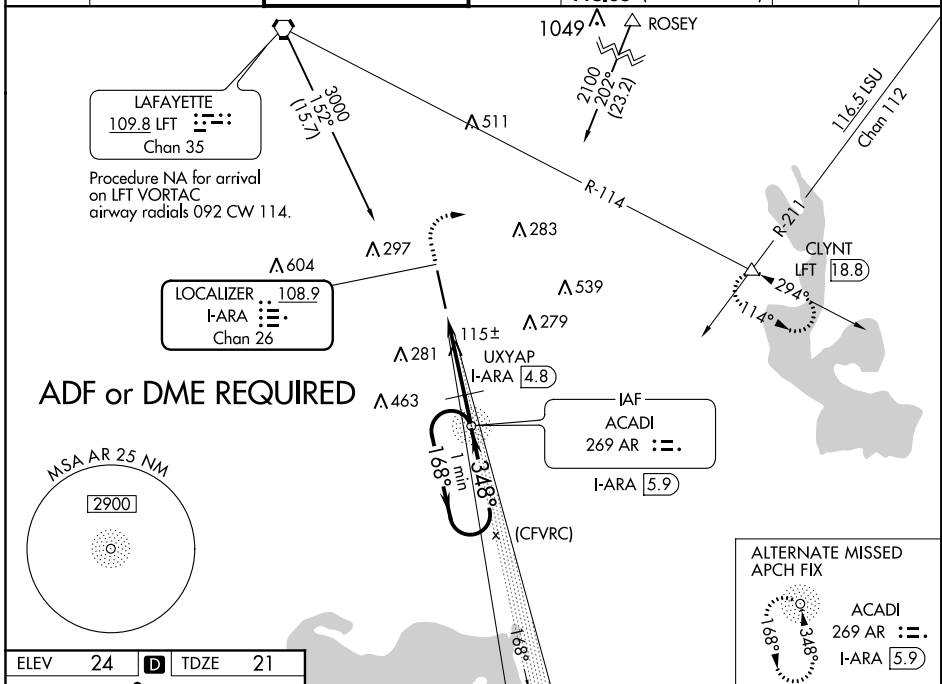
ACADIANA RGNL (A.R.A)

▼ Circling NA to Rwys 17W and 35W. ADF or DME required.  
 For inop ALS, increase S-ILS 35 Cat E visibility to 3/4 SM,  
▲ S-LOC 35 Cat E visibility to 1 1/2 SM, and UXYAP FIX minimums  
 S-LOC 35 Cats C/D/E visibility to 1 SM.



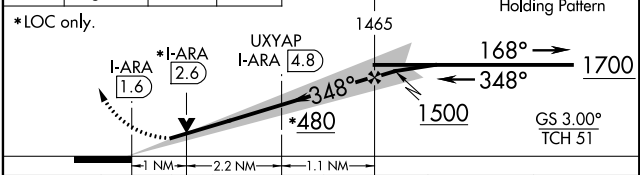
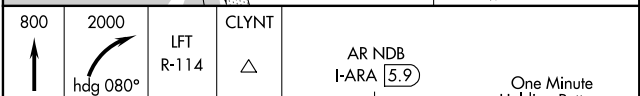
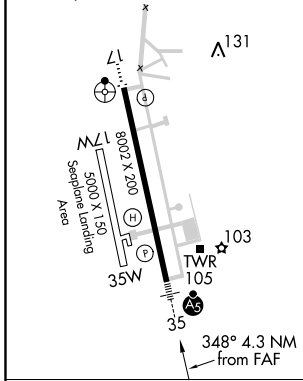
**MISSED APPROACH:** Climb to 800 then climbing  
 right turn to 2000 on heading 080° and LFT R-114  
 to CLYNT INT/LFT 18.8 DME and hold.

ASOS <b>133.325</b>	LAFAYETTE APP CON * <b>121.1 268.7</b>	ACADIANA TOWER * <b>125.0 (CTAF) 239.3</b>	GND CON <b>121.7</b>	CLNC DEL <b>121.7</b> <b>118.05</b> (when twr closed)	UNICOM <b>122.95</b>	<b>0 *</b> <b>122.7</b>
------------------------	---	---	-------------------------	---	-------------------------	----------------------------



ELEV <b>24</b>	<b>D</b>	TDZE <b>21</b>
----------------	----------	----------------

HIRL Rwy 17-35  
 MIRL Rwy 17W-35W



CATEGORY	A	B	C	D	E
S-ILS 35	221-1/2 200 (200-1/2)				
S-LOC 35	480-1/2	459 (500-1/2)	480-7/8	459 (500-7/8)	900-3
<b>C</b> CIRCLING	480-1	456 (500-1)	600-1 1/2 576 (600-1 1/2)	680-2 656 (700-2)	876 (900-3)
UXYAP FIX MINIMUMS (DME REQUIRED)					
S-LOC 35	380-1/2	359 (400-1/2)	380-5/8 359 (400-5/8)		
<b>C</b> CIRCLING	440-1 416 (500-1)	480-1 456 (500-1)	600-1 1/2 576 (600-1 1/2)	680-2 656 (700-2)	900-3 876 (900-3)

FAF to MAP 4.3 NM

Knots	60	90	120	150	180
Min:Sec	4:18	2:52	2:09	1:43	1:26

SC-4, 08 NOV 2018 to 06 DEC 2018

SC-4, 08 NOV 2018 to 06 DEC 2018