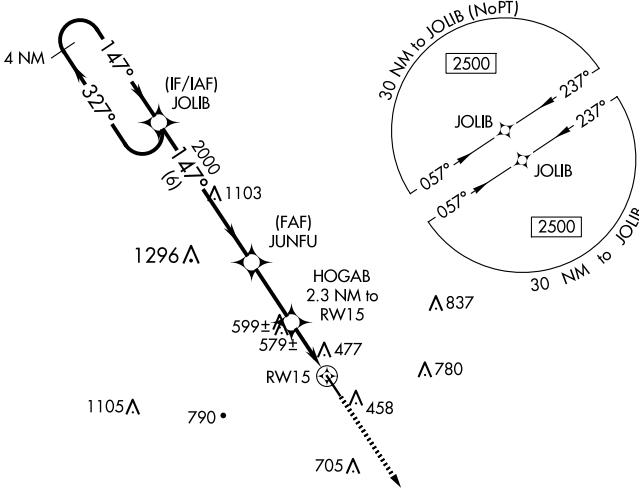


WAAS CH <b>49234</b> <b>W15A</b>	APP CRS <b>147°</b>	Rwy Idg TDZE Apt Elev	<b>5003</b> <b>392</b> <b>392</b>
--	------------------------	-----------------------------	---

# RNAV (GPS) RWY 15

BOONEVILLE/BALDWIN (8M1)

RNP APCH.		MISSED APPROACH: Climb to 2500 direct MANIL and hold.
<p><b>▼</b> Baro-VNAV NA. Use Corinth altimeter setting, when not received use Tupelo altimeter setting and increase all DA 4 feet, and all MDA 20 feet. Rwy 15 helicopter visibility reduction below 3/4 SM NA.</p> <p><b>▲</b> NA</p>		
CRX AWOS-3PT <b>118.675</b>	MEMPHIS CENTER <b>135.9 273.55</b>	UNICOM <b>122.8 (CTAF) 0</b>



SC-4, 15 MAY 2025 to 12 JUN 2025

SC-4, 15 MAY 2025 to 12 JUN 2025

ELEV 392	TDZE 392
----------	----------

MIRL Rwy 15-33 **0**  
REIL Rwy 15 and 33

VGSI and RNAV glidepath not coincident (VGSI Angle 3.00/TCH 40).

4 NM Holding Pattern	JOLIB	JUNFU	HOGAB	RWY 15
2500	2000	2000	1160	
GP 3.00° TCH 55	6 NM	2.6 NM	2.3 NM	

CATEGORY	A	B	C	D
LPV DA		777-1¼	385 (400-1¼)	
LNAV/VNAV DA		842-1½	450 (500-1½)	
LNAV MDA		880-1 488 (500-1)	880-1¾ 488 (500-1¾)	

MANIL **2500** **MANIL**  
\*LNAV only.