

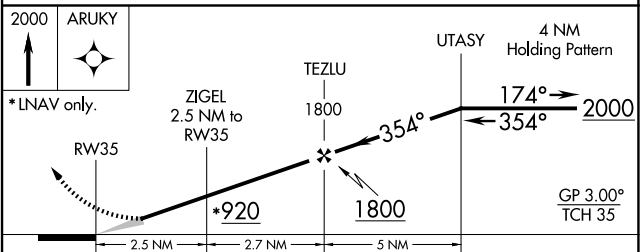
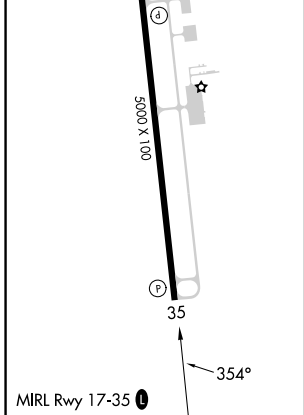
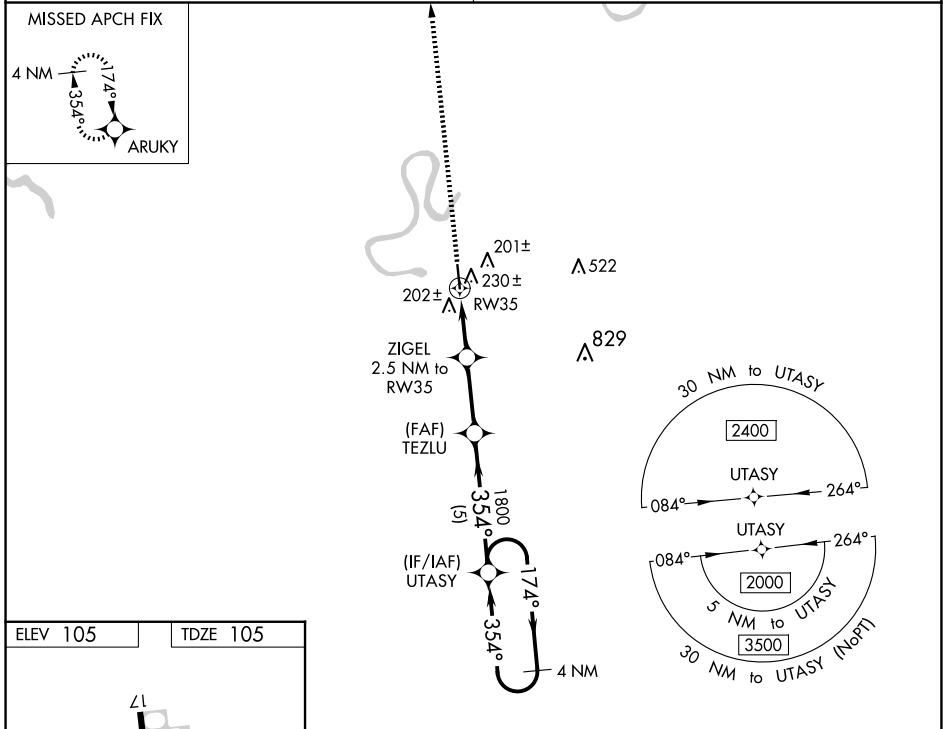
WAAS CH 99431 W35A	APP CRS 354°	Rwy Ldg TDZE Apt Elev	5000 105 105
----------------------------------------	------------------------	-----------------------------	-----------------------------------------

RNAV (GPS) RWY 35

YAZOO COUNTY (87I)

RNP APCH.	MISSED APPROACH: Climb to 2000 direct ARUKY and hold.
<p>▼ Baro-VNAV NA.</p> <p>▲ NA Use Madison altimeter setting; when not received, use Jackson altimeter setting and increase all DA 8 feet and all MDA 20 feet.</p>	

MEMPHIS CENTER 132.5 259.1	UNICOM 122.8 (CTAF) 1
--------------------------------------	---------------------------------



CATEGORY	A	B	C	D
LPV DA		461-1¼	356 (400-1¼)	
LNAV/VNAV DA		606-1¾	501 (500-1¾)	
LNAV MDA	600-1	495 (500-1)	600-1⅝	495 (500-1⅝)

SC-4, 15 MAY 2025 to 12 JUN 2025

SC-4, 15 MAY 2025 to 12 JUN 2025