

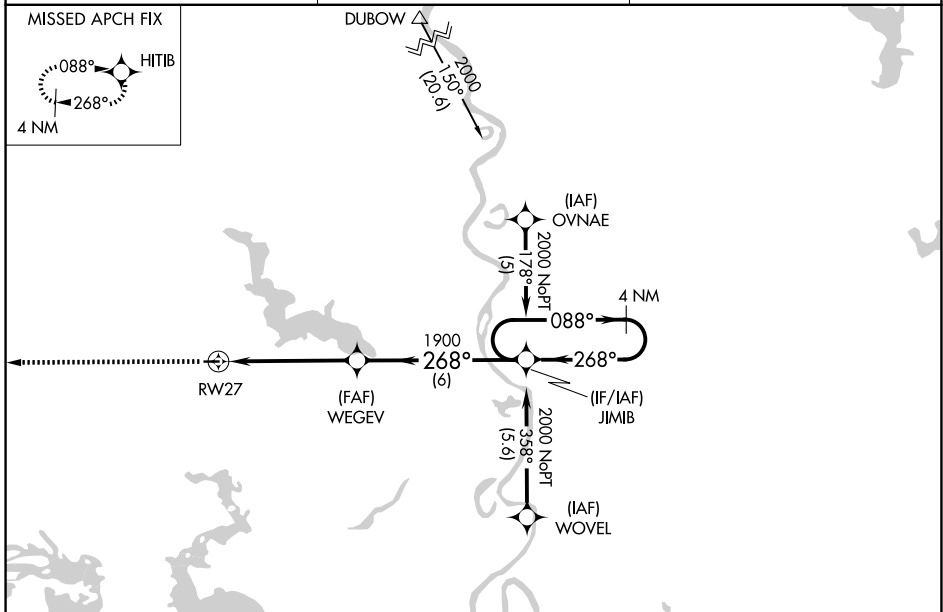
APP CRS	Rwy Ldg	2998
268°	TDZE	260
	Apt Elev	260

RNAV (GPS) RWY 27

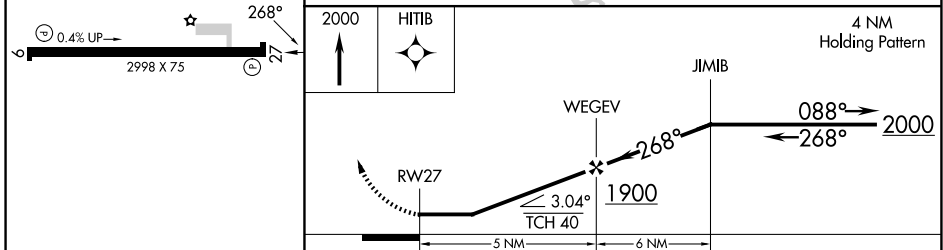
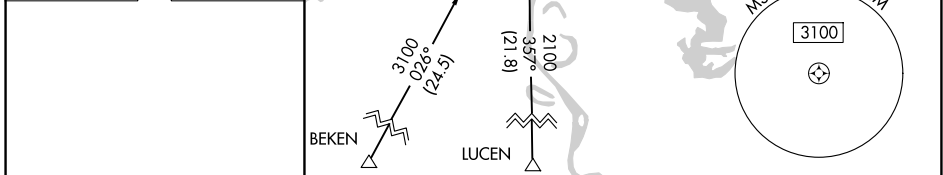
VIVIAN (3F4)

RNP APCH.	MISSED APPROACH: Climb to 2000 direct HITIB and hold.
▼ Use Shreveport Rgnl altimeter setting; when not received, use Shreveport Downtown altimeter setting. Procedure NA at night. Rwy 27 helicopter visibility reduction below 1 SM NA.	

SHREVEPORT APP CON 119.9 335.55	GCO 135.075	UNICOM 122.8 (CTAF) 0
---	-----------------------	---------------------------------



ELEV 260	TDZE 260
----------	----------



MIRL Rwy 9-27 0				
REIL Rwy 9 0				
REIL Rwy 27				
CATEGORY	A	B	C	D
LNAV MDA	860-1	600 (600-1)	860-1¾ 600 (600-1¾)	NA

SC-4, 07 AUG 2025 to 04 SEP 2025

SC-4, 07 AUG 2025 to 04 SEP 2025