

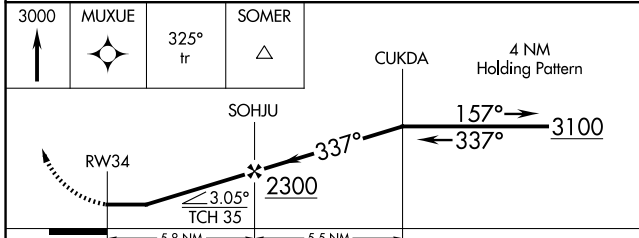
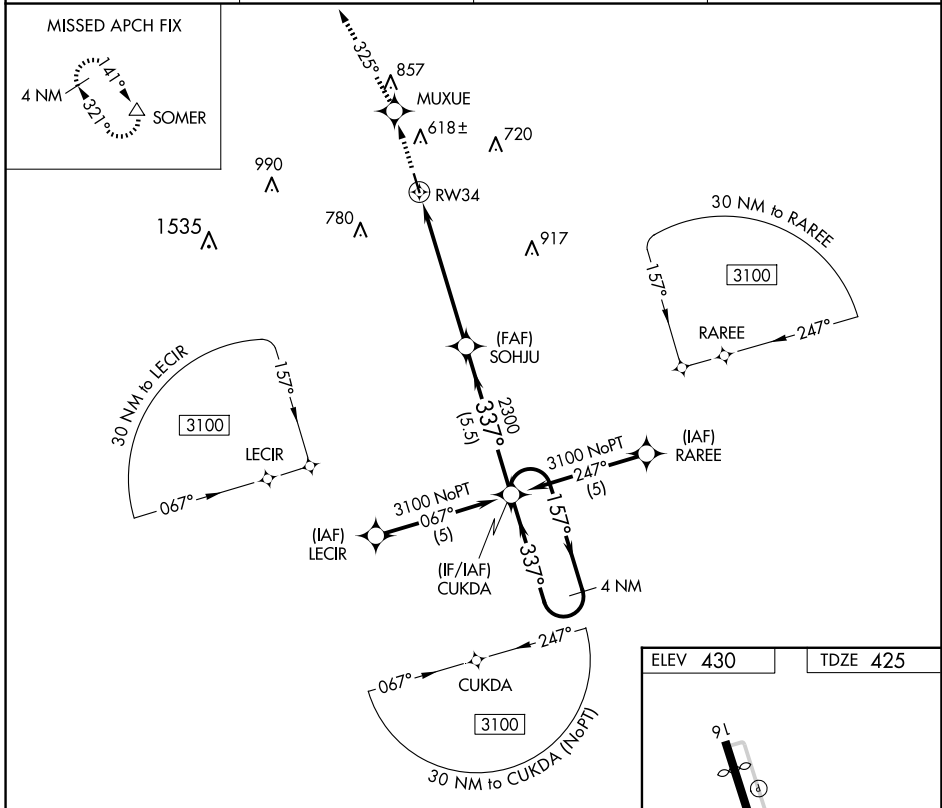
APP CRS	Rwy Idg	4000
337°	TDZE	425
	Apt Elev	430

RNAV (GPS) RWY 34

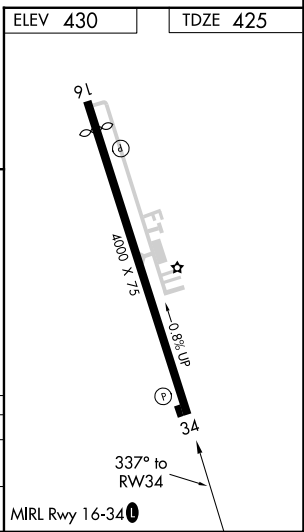
PLEASANTON MUNI (P/E/Z)

RNP APCH.	When local altimeter setting not received, use Kelly Fld altimeter setting and increase all MDA 100 feet. Procedure NA at night. Rwy 34 helicopter visibility reduction below 1 SM NA.	MISSED APPROACH: Climb to 3000 direct MUXUE and via 325° track to SOMER and hold.
-----------	--	---

AWOS-3 118.575	SAN ANTONIO APP CON 118.05 353.5	CLNC DEL 121.375	UNICOM 122.7 (CTAF)
--------------------------	--	----------------------------	-------------------------------



CATEGORY	A	B	C	D
LNVA MDA	960-1	535 (600-1)	NA	
CIRCLING	1020-1	590 (600-1)	NA	



SC-3, 15 MAY 2025 to 12 JUN 2025

SC-3, 15 MAY 2025 to 12 JUN 2025