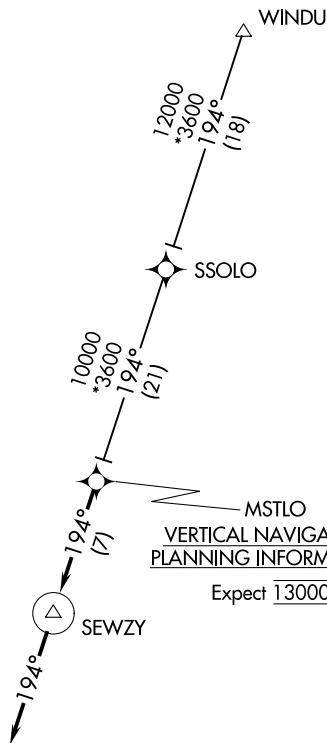


MSTLO TWO ARRIVAL (RNAV)

AUSTIN, TEXAS

AUSTIN APP CON
127.225 317.65
GEORGETOWN MUNI ATIS
118.6
SAN MARCOS RGNL ATIS
120.825

- NOTE: RADAR required.
- NOTE: RNAV 1.
- NOTE: DME/DME/IRU or GPS required.
- NOTE: Turbojet and turboprop aircraft only.



GEORGETOWN MUNI

LAGO VISTA TX-RUSTY ALLEN

LAKEWAY AIRPARK

TAYLOR MUNI

AUSTIN EXECUTIVE

SAN MARCOS RGNL

NOTE: Chart not to scale.

ARRIVAL ROUTE DESCRIPTION

SSOLO TRANSITION (SSOLO.MSTLO2)
WINDU TRANSITION (WINDU.MSTLO2)

LANDING ALL AIRPORTS: From MSTLO on track 194° to SEWZY, then on track 194°. Expect RADAR vectors to final approach course.