

WAAS CH 70632 W35A	APP CRS 351°	Rwy ldg 5214 TDZE 583 Apt Elev 595
--	------------------------	---

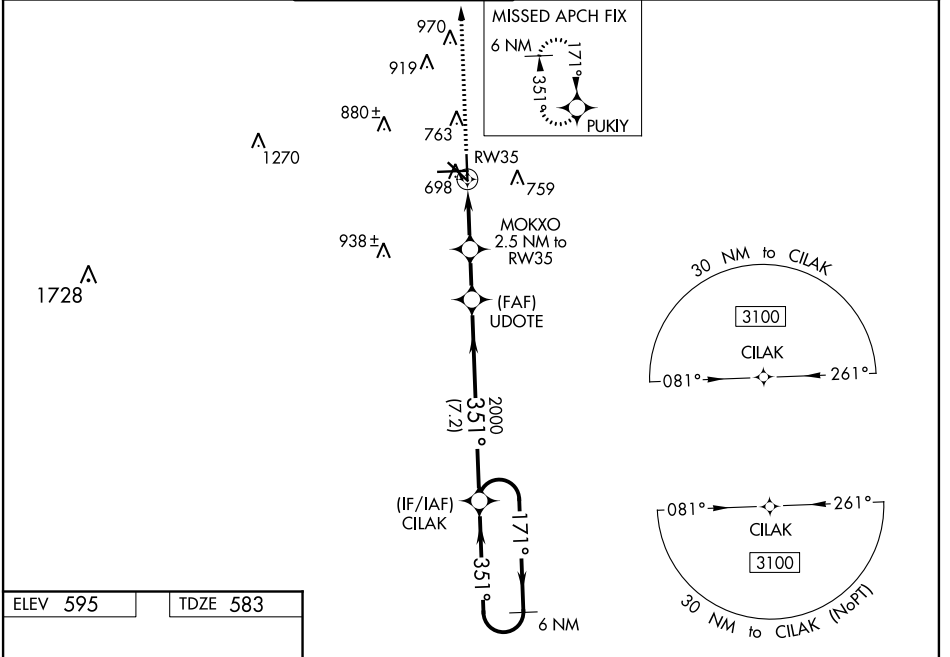
RNAV (GPS) RWY 35

SAN MARCOS RGNL (HYI)

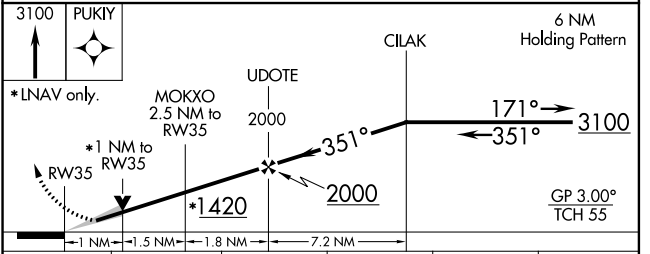
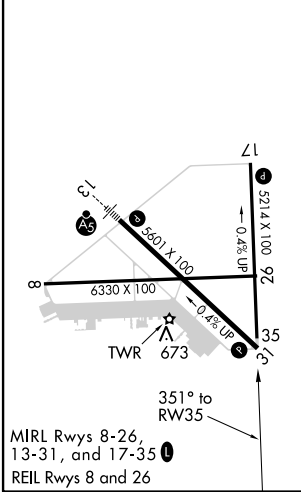
⚠ Baro-VNAV NA when using New Braunfels altimeter setting. For uncompensated Baro-VNAV systems, LNAV/VNAV NA below -16°C (3°F) or above 54°C (130°F). When local altimeter setting not received, use New Braunfels altimeter setting and increase all DA 43 feet and all MDA 60 feet; increase LPV all Cats and LNAV/VNAV all Cats visibility 1/8 mile; and increase LNAV Cat C/D/E visibility and Circling Cat C/D visibility 1/4. Circling NA for Cat E SW of Rwy 13-31. DME/DME RNP-0.3 NA. VDP NA with New Braunfels altimeter setting.

MISSED APPROACH:
Climb to 3100 direct PUKIY and hold.

ATIS ★ 120.825	AUSTIN APP CON 119.0 370.85	SAN MARCOS TOWER ★ 126.825 (CTAF)	GND CON 120.125	CLNC DEL 120.125	CLNC DEL 121.35 (When ATCT Closed)
--------------------------	---------------------------------------	---	---------------------------	----------------------------	---



ELEV 595	TDZE 583
----------	----------



CATEGORY	A	B	C	D	E
LPV DA		833-3/4	250 (300-3/4)		
LNAV/VNAV DA		884-1	301 (300-1)		
LNAV MDA	960-1	377 (400-1)	960-1 1/8	377 (400-1 1/8)	
C CIRCLING	1080-1 485 (500-1)	1120-1 525 (600-1)	1240-1 3/4 645 (700-1 3/4)	1320-2 1/4 725 (800-2 1/4)	1340-2 3/4 745 (800-2 3/4)