

LOC I-RUM 108.7	APP CRS 126°	Rwy Idg 5601
		TDZE 593
		Apt Elev 595

ILS or LOC RWY 13

SAN MARCOS RGNL (HYI)

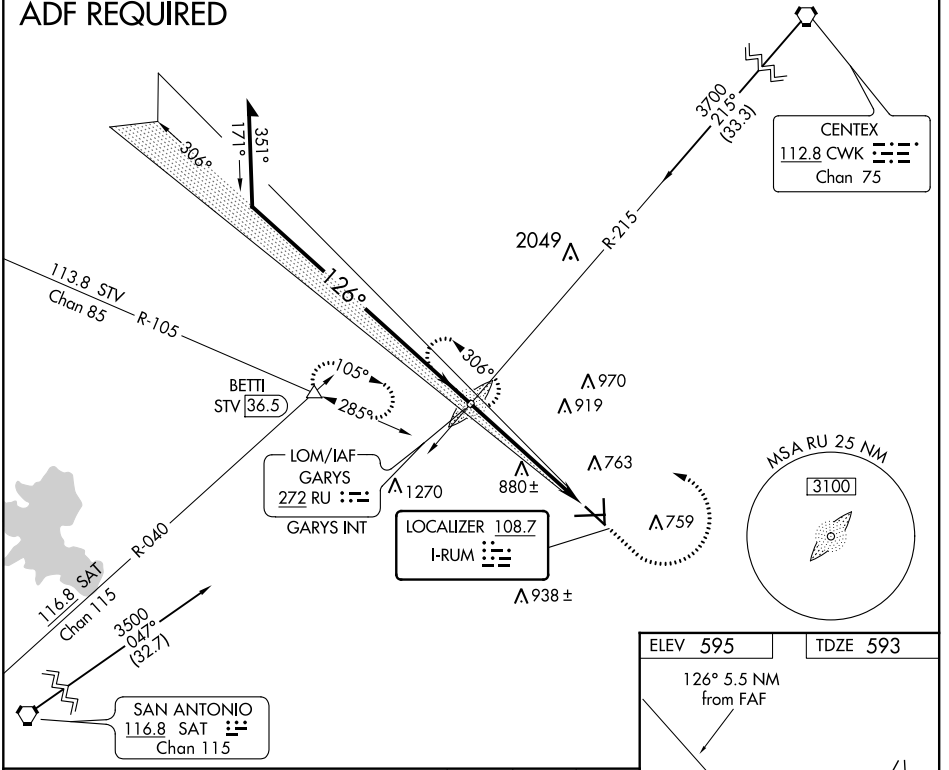
NA Circling Cat E NA southwest of Rwy 13-31.
 For inop MALSRL, increase S-ILS 13 Cat E visibility ¼ mile, and S-LOC 13 Cat E ½ mile. ADF required.



MISSED APPROACH: Climb to 2000 then climbing left turn to 3200 direct GARYS LOM and hold.

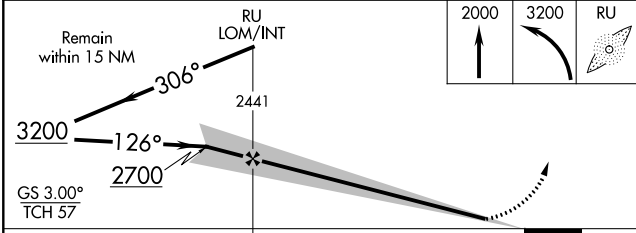
ATIS ★ 120.825	AUSTIN APP CON 119.0 370.85	SAN MARCOS TOWER ★ 126.825 (CTAF) L	GND CON 120.125	CLNC DEL 120.125	CLNC DEL 121.35 (When ATCT Closed)
--------------------------	---------------------------------------	--	---------------------------	----------------------------	---

ADF REQUIRED



SC-3, 19 JUL 2018 to 16 AUG 2018

SC-3, 19 JUL 2018 to 16 AUG 2018



ELEV 595	TDZE 593
----------	----------

MIRL Rwy 8-26, 13-31, and 17-35 **L**
 REIL Rwy 8 and 26

FAF to MAP 5.5 NM

Knots	60	90	120	150	180
Min:Sec	5:30	3:40	2:45	2:12	1:50