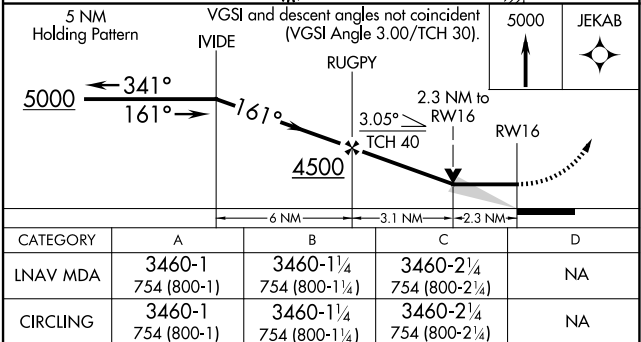
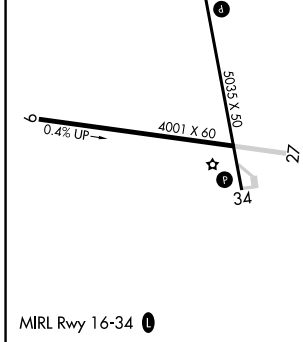
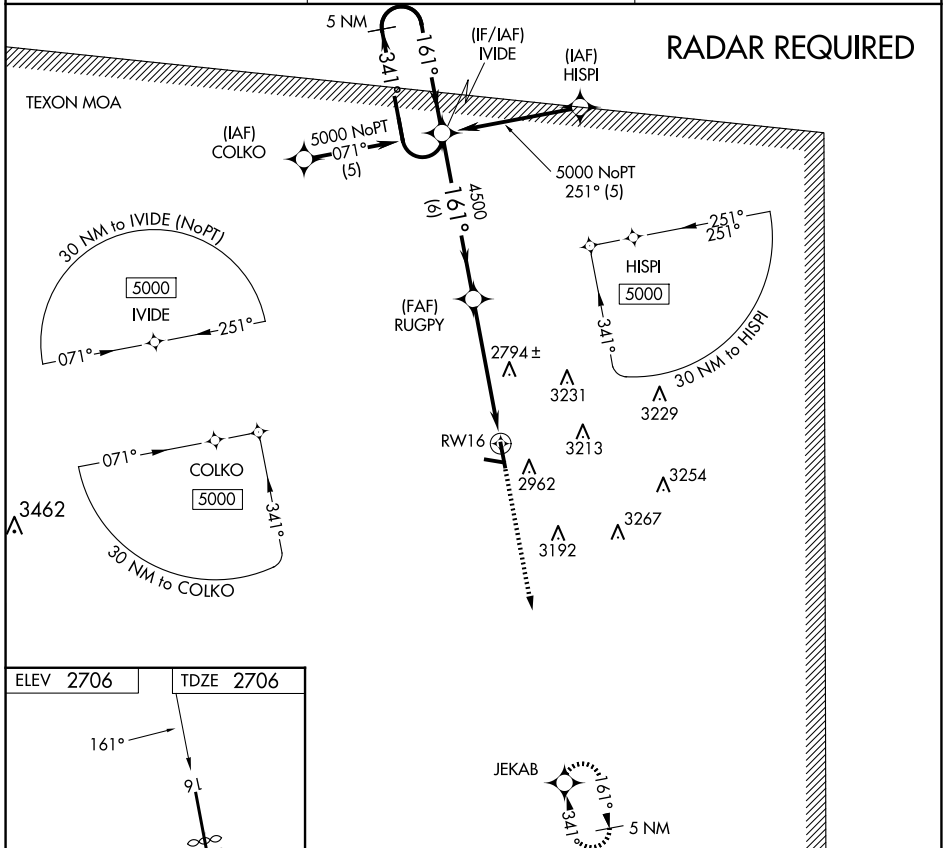


APP CRS	Rwy Idg	4030
161°	TDZE	2706
	Apt Elev	2706

RNAV (GPS) RWY 16

REAGAN COUNTY (E41)

RNP APCH		MISSED APPROACH: Climb to 5000 direct JEKAB and hold.	
<p>When local altimeter not received, use San Angelo altimeter setting. Circling NA east of Rwy 16-34.</p>			
AWOS-3PT	FORT WORTH CENTER	CTAF	
118.4	126.15 322.55	122.9	



SC-3, 15 MAY 2025 to 12 JUN 2025

SC-3, 15 MAY 2025 to 12 JUN 2025