

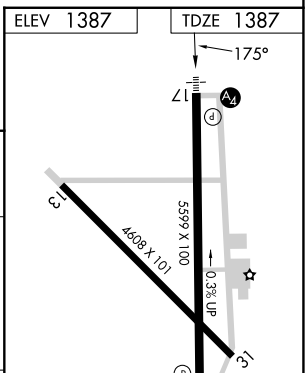
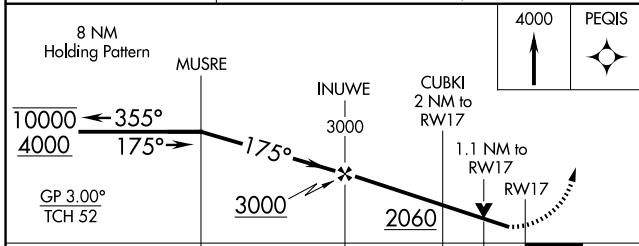
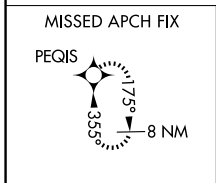
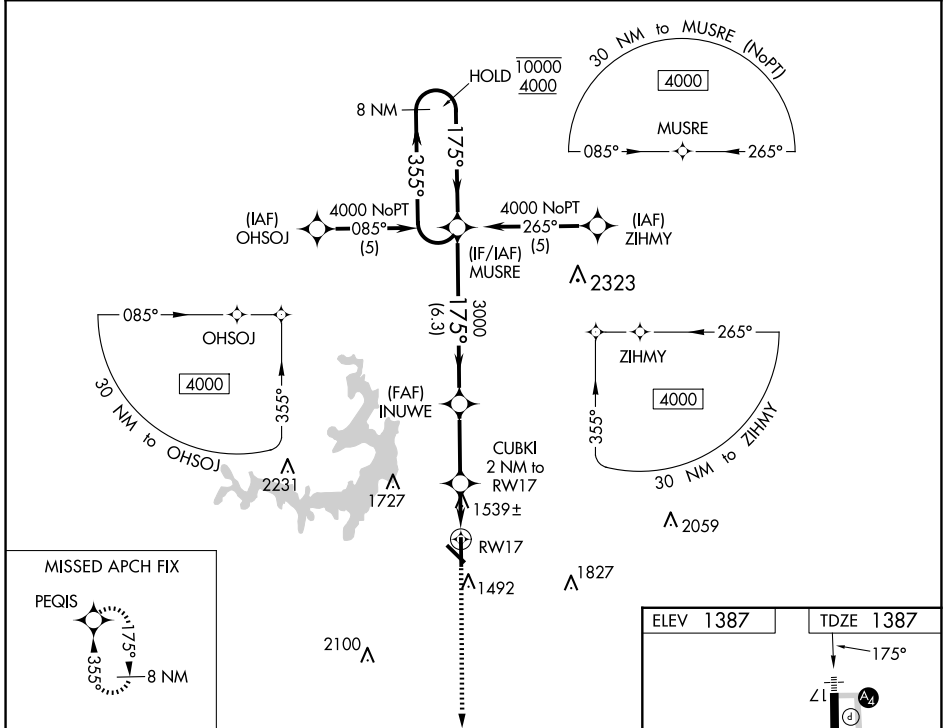
WAAS CH <b>70325</b> <b>W17A</b>	APP CRS <b>175°</b>	Rwy Idg TDZE Apt Elev	<b>5599</b> <b>1387</b> <b>1387</b>
----------------------------------------	------------------------	-----------------------------	-------------------------------------------

# RNAV (GPS) RWY 17

BROWNWOOD RGNL (BWD)

RNP APCH - GPS.	MALS	MISSED APPROACH: Climb to 4000 direct PEQIS and hold.
<p>Rwy 17 helicopter visibility reduction below 3/4 SM NA. For inop ALS, increase LNAV Cats C and D visibility to 1 1/2 SM. Inop table does not apply to LPV all Cats.</p>		

AWOS-3 <b>118.325</b>	FORT WORTH CENTER <b>127.45 290.3</b>	UNICOM <b>122.8(CTAF)</b>
--------------------------	------------------------------------------	------------------------------



CATEGORY	A	B	C	D
LPV DA		1637-3/4	250 (300-3/4)	
LNAV MDA	1800-3/4	413 (500-3/4)	1800-1	413 (500-1)
CIRCLING	1820-1 433 (500-1)	1840-1 453 (500-1)	2040-1 1/4 653 (700-1 1/4)	2160-2 1/2 773 (800-2 1/2)

MIRL Rwy 13-31 and 17-35

SC-3, 15 MAY 2025 to 12 JUN 2025

SC-3, 15 MAY 2025 to 12 JUN 2025