

LOC/DME I-ACT 109.7 Chan 34	APP CRS 187°	Rwy Idg TDZE Apt Elev	6605 505 516
--	------------------------	-----------------------------	---

ILS or LOC RWY 19

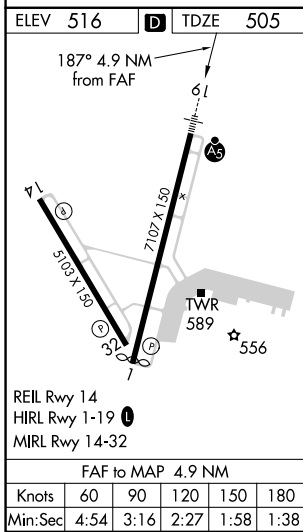
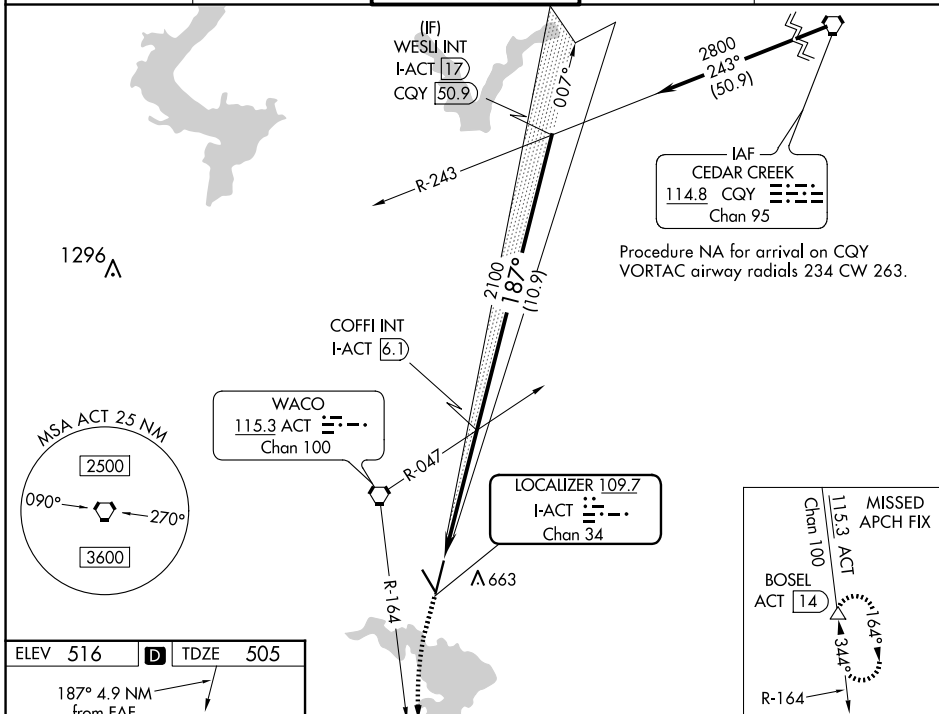
WACO RGNL (ACT)

DME required.

MALS MISSED APPROACH: Climb to 1500 then climbing left turn to 4000 on ACT VORTAC R-164 to BOSEL 14 DME and hold, continue climb-in-hold to 4000.

ASR ** RVR 1800 authorized with use of FD or AP or HUD to DA.

ATIS 123.85	WACO APP CON * 127.65 227.125	WACO TOWER * 119.3 (CTAF) 0 257.8	GND CON 121.9	UNICOM 122.95
-----------------------	---	---	-------------------------	-------------------------



1500 ↑ ACT R-164	4000 ACT R-164	BOSEL △	WESLI INT I-ACT 17	
			COFFI INT I-ACT 6.1	
*LOC only.				
I-ACT 1.3		*I-ACT 2.3	2100	2800
-1.1		3.8 NM	10.9 NM	GS 3.00° TCH 55
CATEGORY	A	B	C	D
S-ILS 19**	705/24 200 (200-½)			
S-LOC 19	900/24	395 (400-½)	900/35	395 (400-¾)
<input checked="" type="checkbox"/> CIRCLING	940-1 424 (500-1)	980-1 464 (500-1)	1020-1½ 504 (600-1½)	1160-2 644 (700-2)

SC-3, 15 MAY 2025 to 12 JUN 2025

SC-3, 15 MAY 2025 to 12 JUN 2025