

TRUUK TWO ARRIVAL (RNAV)

DALLAS-FORT WORTH, TEXAS

REGIONAL APP CON
 118.1 306.95
 FORT WORTH ALLIANCE ATIS
 126.925
 FORT WORTH NAS JRB/CARSWELL FIELD ATIS ★
 351.675
 FORT WORTH MEACHAM ATIS
 120.7

NOTE: RADAR required.
 NOTE: RNAV 1.
 NOTE: DME/DME/IRU or GPS required.

SASIE
 VERTICAL NAVIGATION
 PLANNING INFORMATION

TURBOJET NORTH FLOW:

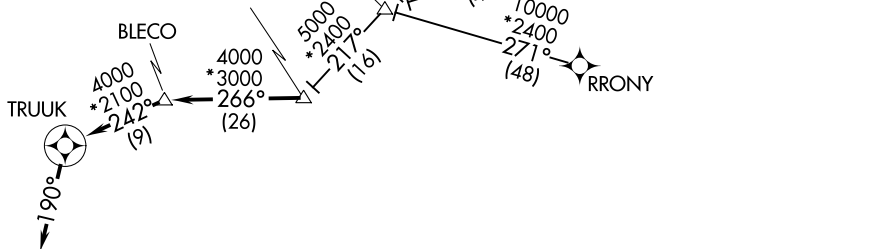
Expect 10000

TURBOJET SOUTH FLOW:

Expect 11000

PROPS:

Expect 5000 or 6000



ARRIVAL ROUTE DESCRIPTION

AXxee TRANSITION (AXxee.TRUUK2): (For aircraft filing FL230 and below).

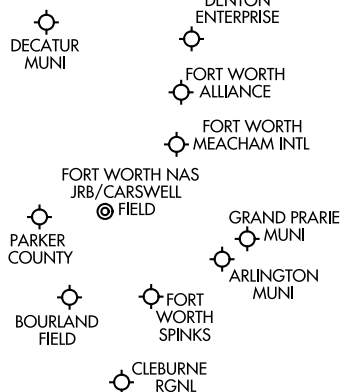
HITUG TRANSITION (HITUG.TRUUK2)

PONY TRANSITION (PONY.TRUUK2)

RRNET TRANSITION (RRNET.TRUUK2)

RRONY TRANSITION (RRONY.TRUUK2): (For aircraft filing FL230 and below).

From SASIE on track 266° to BLECO, then on track 242° to TRUUK, then on track 190°. Expect RADAR vectors to final approach course.



NOTE: Chart not to scale.

TRUUK TWO ARRIVAL (RNAV)

DALLAS-FORT WORTH, TEXAS