

APP CRS 343°	Rwy Idg 4200
	TDZE 1047
	Apt Elev 1047

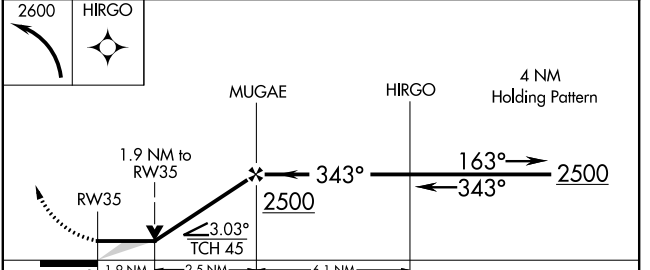
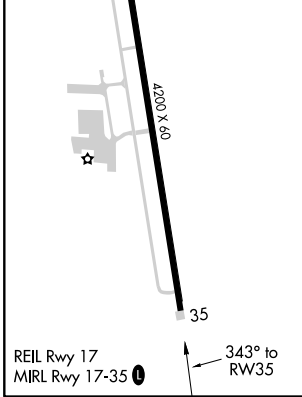
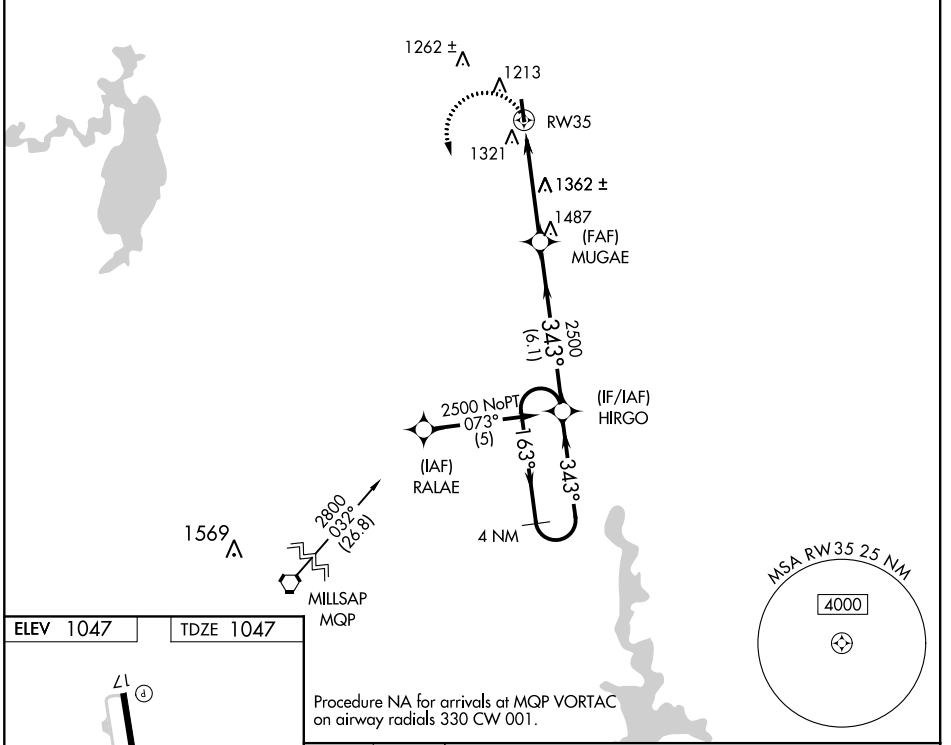
RNAV (GPS) RWY 35

DECATUR MUNI (LUD)

▼ When local altimeter setting not received, use Fort Worth Meacham Intl altimeter setting and increase all MDAs 120 feet, and Cat B visibilities ¼ mile. DME/DME RNP-0.3 NA. VDP NA when using Fort Worth Meacham Intl altimeter setting.

▲ MISSED APPROACH: Climbing left turn to 2600 direct HIRGO and hold.

AWOS-3 118.225	REGIONAL APP CON 118.1 306.95	UNICOM 122.8(CTAF) 0
--------------------------	---	--------------------------------



CATEGORY	A	B	C	D
LNAV MDA	1680-1	633 (700-1)	NA	
CIRCLING	1680-1	633 (700-1)	NA	

SC-2: 17 AUG 2017 to 14 SEP 2017

SC-2: 17 AUG 2017 to 14 SEP 2017