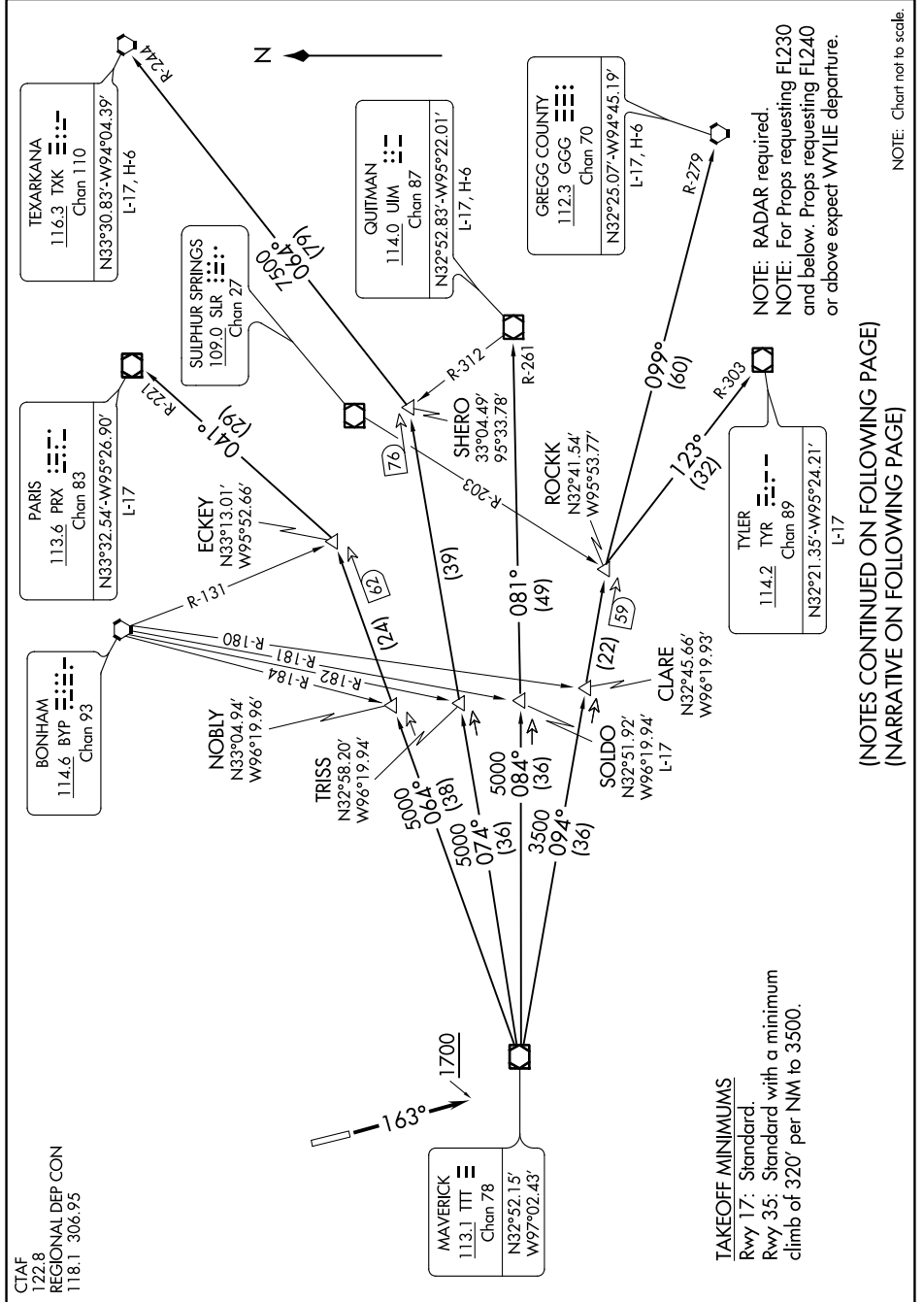


SC-2, 12 OCT 2017 to 09 NOV 2017



NOTE: Chart not to scale.

NOTE: RADAR required.  
NOTE: For Props requesting FL230 and below. Props requesting FL240 or above expect WYLIE departure.

(NOTES CONTINUED ON FOLLOWING PAGE)  
(NARRATIVE ON FOLLOWING PAGE)

SC-2, 12 OCT 2017 to 09 NOV 2017

**TAKEOFF MINIMUMS**  
Rwy 17: Standard.  
Rwy 35: Standard with a minimum climb of 320' per NM to 3500.