

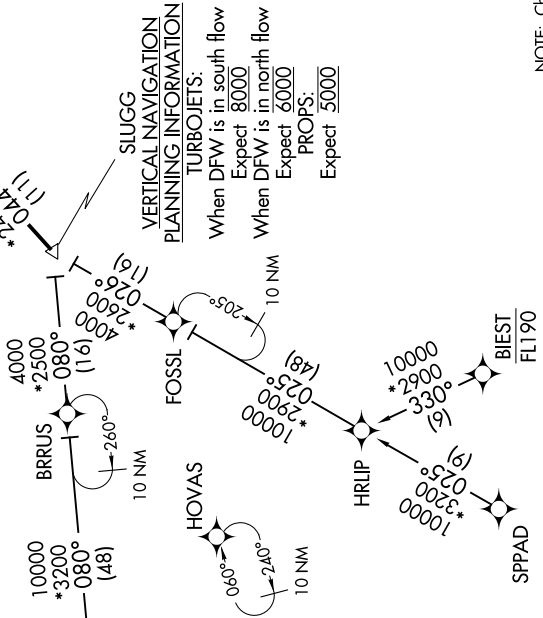
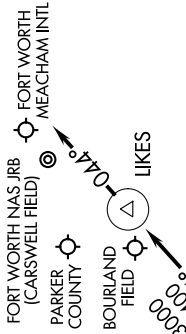
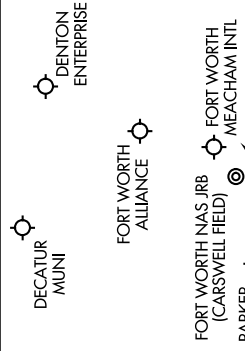
# LIKES THREE ARRIVAL (RNAV)

FORT WORTH, TEXAS

SC-2, 22 JUN 2017 to 20 JUL 2017

REGIONAL APP CON  
 135.975 125.8 257.95  
 FORT WORTH ALLIANCE ATIS  
 126.925  
 FORT WORTH NAS JRB (CARSWELL FIELD) ATIS \*  
 351.675  
 FORT WORTH MEACHAM INTL ATIS  
 120.7

NOTE: RADAR required.  
 NOTE: RNAV 1.  
 NOTE: DME/DME/IRU or GPS required.



**VERTICAL NAVIGATION PLANNING INFORMATION**  
**TURBOJET:**  
 When DFW is in south flow  
 Expect 8000  
 When DFW is in north flow  
 Expect 6000  
**PROPS:**  
 Expect 5000

NOTE: Chart not to scale.

**ARRIVAL ROUTE DESCRIPTION**

**BIEST TRANSITION (BIEST.LIKES3)**  
**FOSSL TRANSITION (FOSSL.LIKES3):** (For ACT and GRK terminal area departures only.)

**GEEKY TRANSITION (GEEKY.LIKES3)**  
**LYMPY TRANSITION (LYMPY.LIKES3):** (For ABI terminal area departures only.)

**SPPAD TRANSITION (SPPAD.LIKES3)**

From SLUGG on track 044° to LIKES, then on track 044°. Expect RADAR vectors to final approach course.

SC-2, 22 JUN 2017 to 20 JUL 2017

# LIKES THREE ARRIVAL (RNAV)

FORT WORTH, TEXAS