

APP CRS <b>356°</b>	Rwy Idg <b>6109</b>
	TDZE <b>365</b>
	Apt Elev <b>366</b>

# RNAV (GPS) RWY 36

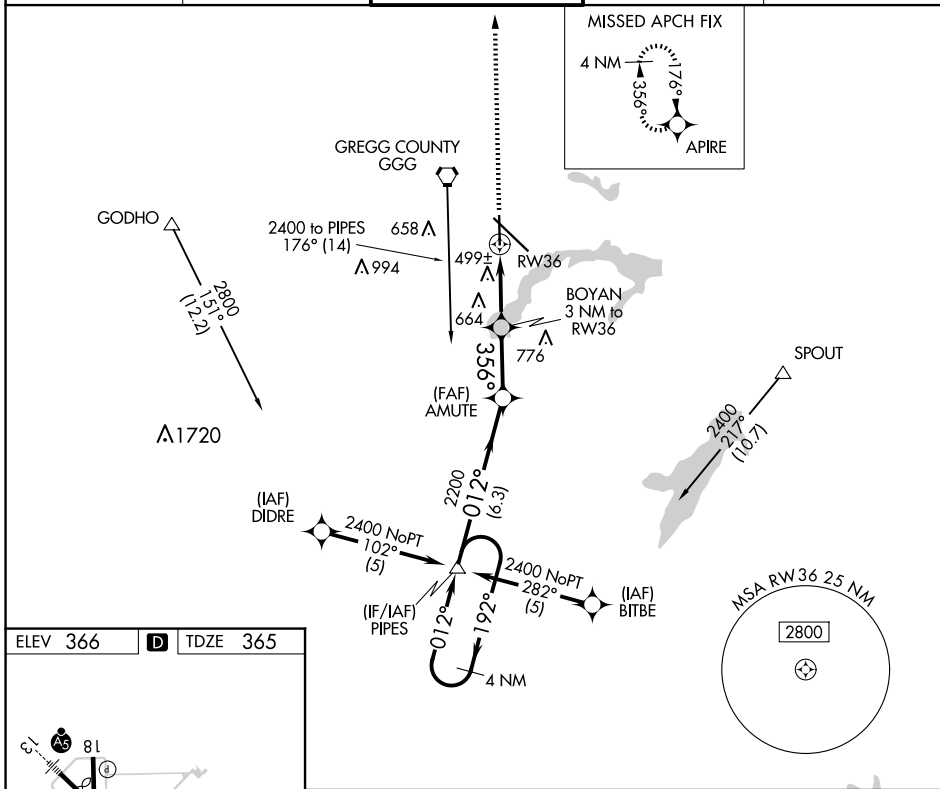
EAST TEXAS RGNL (GGG)

RNP APCH - GPS.

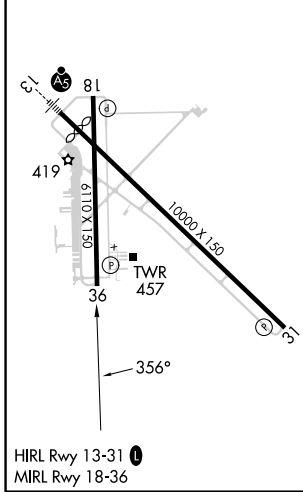
**▼** Rwy 36 helicopter visibility reduction below 3/4 SM NA. When local altimeter setting not received, use Gilmer altimeter setting and increase all MDA 60 feet and LNAV and Circling Cats C/D visibility 1/4 SM.

MISSED APPROACH: Climb to 2600 direct APIRE and hold.

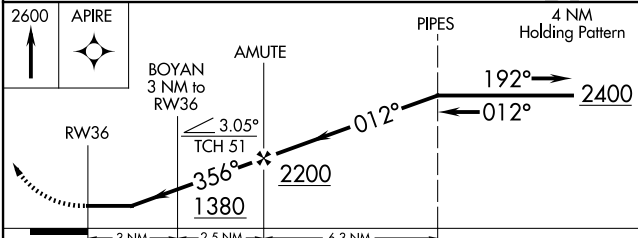
ATIS <b>119.65</b>	LONGVIEW APP CON* <b>124.675 257.975</b>	EASTEX TOWER* <b>119.2 (CTAF) 0377.05</b>	GND CON <b>121.6</b>	UNICOM <b>122.95</b>
-----------------------	---	--	-------------------------	-------------------------



ELEV 366	<b>D</b>	TDZE 365
----------	----------	----------



LONGVIEW, TEXAS  
Amdt 1B 16MAY24



CATEGORY	A	B	C	D
LNAV MDA	760-1 395 (400-1)			760-1 1/4 395 (400-1 1/4)
CIRCLING	860-1 494 (500-1)		980-1 3/4 614 (700-1 1/4)	1080-2 1/4 714 (800-2 1/4)

# RNAV (GPS) RWY 36

SC-2, 15 MAY 2025 to 12 JUN 2025

SC-2, 15 MAY 2025 to 12 JUN 2025