

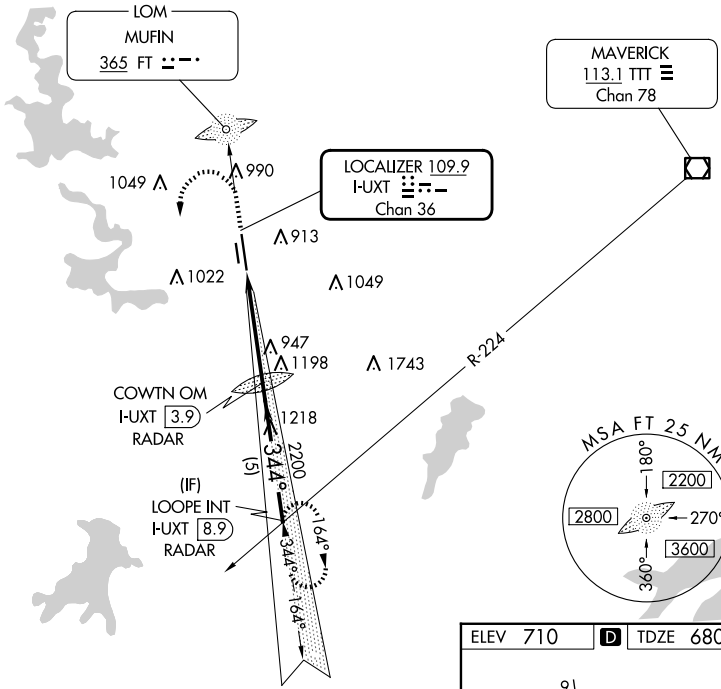
LOC I-UXT <b>109.9</b> Chan <b>36</b>	APP CRS <b>344°</b>	Rwy Idg TDZE Apt Elev	<b>7455</b> <b>680</b> <b>710</b>
---	------------------------	-----------------------------	---

# ILS or LOC RWY 34

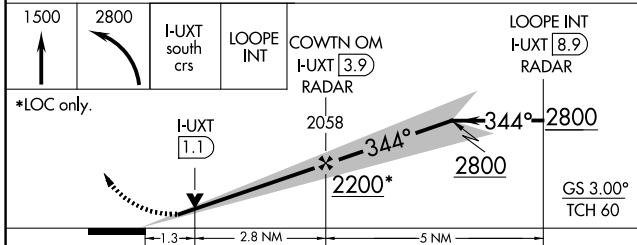
FORT WORTH MEACHAM INTL (FTW)

<p><b>▼</b> Inoperative table does not apply to S-LOC 34 Cat C.</p>		<p>MALS </p>	<p>MISSED APPROACH : Climb to 1500, then climbing left turn to 2800 via I-UXT south course to LOOPE Int/ I-UXT 8.9 DME and hold.</p>	
---	--	--------------	--	--

ATIS <b>120.7</b>	LONE STAR APP CON (North) <b>118.1 306.95</b> (South) <b>135.975 379.9</b>	MEACHAM TOWER <b>118.3 257.8</b>	GND CON <b>121.9</b>	CLNC DEL <b>124.65</b>
----------------------	--	-------------------------------------	-------------------------	---------------------------



## RADAR REQUIRED



ELEV 710	<b>D</b> TDZE 680
----------	-------------------

Knots	60	90	120	150	180
Min:Sec	4:06	2:44	2:03	1:38	1:22

CATEGORY	A	B	C	D
S- ILS 34	880-3/4 200 (200-3/4)			
S-LOC 34	1200-3/4 520 (500-3/4)	1200-1 1/2 520 (500-1 1/2)	1200-1 3/4 520 (500-1 3/4)	1200-1 3/4 520 (500-1 3/4)
<b>C</b> CIRCLING	1260-1 550 (600-1)	1280-1 570 (600-1)	1340-1 3/4 630 (700-1 3/4)	1500-2 1/2 790 (800-2 1/2)