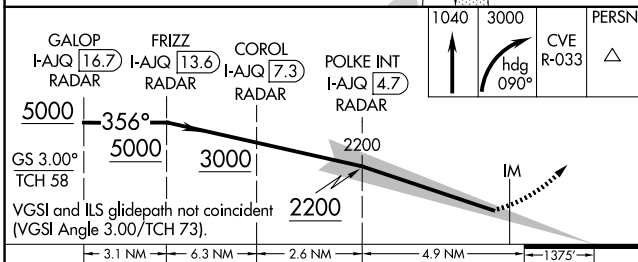
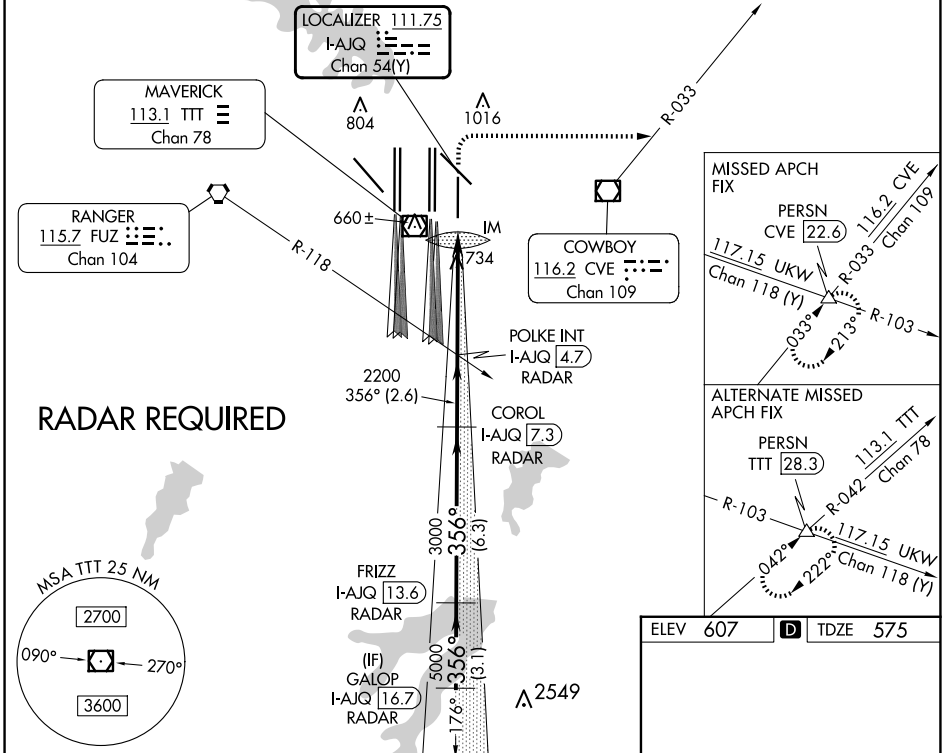


LOC/DME I-AJQ <b>111.75</b> Chan <b>54 (Y)</b>	APP CRS <b>356°</b>	Rwy Idg TDZE Apt Elev <b>8500</b> <b>575</b> <b>607</b>
------------------------------------------------------	------------------------	------------------------------------------------------------------------

# ILS RWY 35R (SA CAT I)

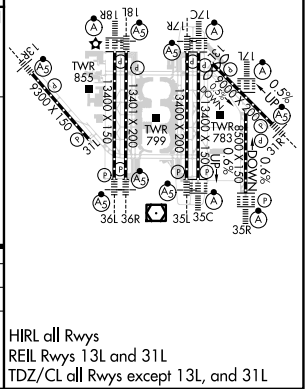
DALLAS-FORT WORTH INTL (DFW)

<b>▽</b> Simultaneous approach authorized with Rwy 36L/R and Rwy 35L/C. DME required. Requires specific OPSPEC, MSPEC, or LOA approval and use of HUD to DH.		ALSF-2 	MISSED APPROACH: Climb to 1040 then climbing right turn to 3000 on heading 090° and CVE VOR/DME R-033 to PERSN/CVE 22.6 DME and hold.		
D-ATIS ARR <b>123.775</b> DEP <b>135.925</b>	LONE STAR APP CON <b>119.4</b>	DFW TOWER <b>126.55 127.5</b> EAST <b>124.15 134.9</b> WEST	GND CON <b>121.65 121.8</b> EAST <b>121.85</b> WEST	CLNC DEL <b>128.25</b>	CPDLC



CATEGORY	A	B	C	D
S-ILS 35R	RA 144/14 150 DA 725			

## SA CATEGORY I ILS - SPECIAL AIRCREW & AIRCRAFT CERTIFICATION REQUIRED



SC-2, 15 MAY 2025 to 12 JUN 2025

SC-2, 15 MAY 2025 to 12 JUN 2025