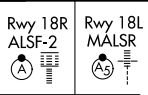


ILS or LOC RWY 18R

DALLAS-FORT WORTH INTL (DFW)

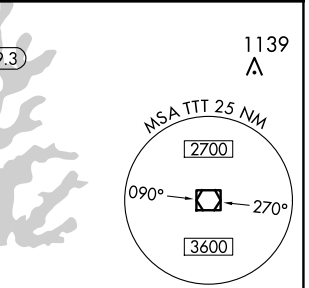
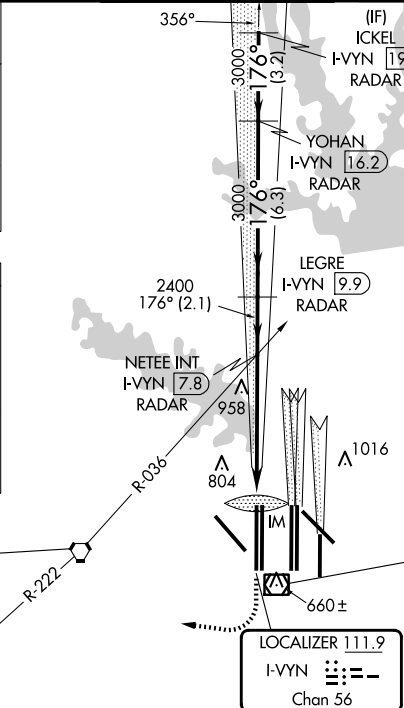
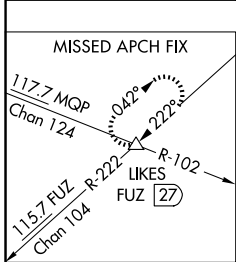
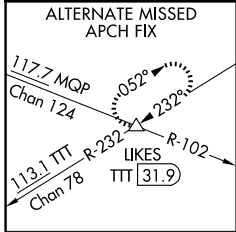
| | | | | |
|--|------------------------|-----------------------------|---|---|
| LOC/DME I-VYIN 111.9 Chan 56 | APP CRS 176° | Rwy Idg TDZE Apt Elev | 18R 13400 607 607 | 18L 13401 602 607 |
|--|------------------------|-----------------------------|---|---|

⚠ Inop table does not apply to Sidestep 18L Cats A and B. DME or RADAR required. Simultaneous approach authorized with Rwy 17 L/C/R. For inop ALSF/MALSR, increase S-LOC 18R Cat C/D and Sidestep 18L Cat C visibility to 1 $\frac{3}{4}$ mile.

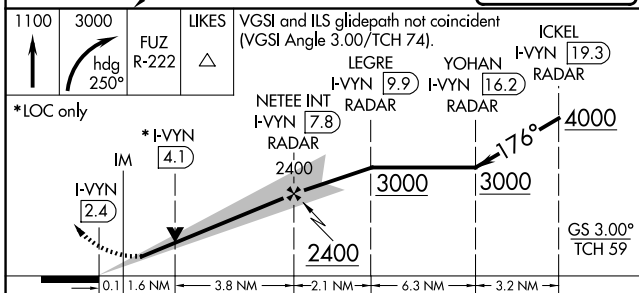
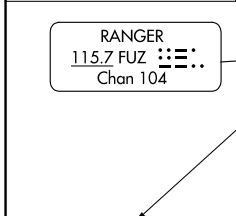


MISSED APPROACH: Climb to 1100 then climbing right turn to 3000 on heading 250° and FUZ VORTAC R-222 to LIKES INT/FUZ VORTAC 27 DME and hold.

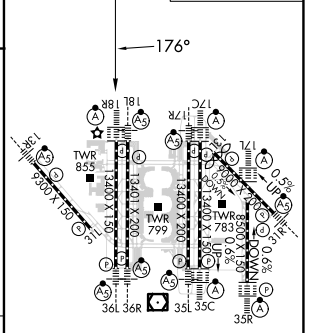
| | | | | | |
|--|-------------------------------------|---|---|---------------------------|-------|
| D-ATIS ARR 123.775 DEP 135.925 | LONE STAR APP CON 118.425 | DFW TOWER 126.55 127.5 EAST 124.15 134.9 WEST | GND CON 121.65 121.8 EAST 121.85 WEST | CLNC DEL 128.25 | CPDLC |
|--|-------------------------------------|---|---|---------------------------|-------|



RADAR REQUIRED



| | |
|----------|-----------------------|
| ELEV 607 | D TDZE 18R 607 |
| | TDZE 18L 602 |



| | | | | |
|--------------|---------|---------------------------|---------------------------|--|
| CATEGORY | A | B | C | D |
| S-ILS 18R | 807/18 | | 200 (200- $\frac{1}{2}$) | |
| S-LOC 18R | 1220/24 | 613 (700- $\frac{1}{2}$) | 1220-1 $\frac{3}{8}$ | 613 (700-1 $\frac{3}{8}$) |
| SIDESTEP 18L | 1220/50 | 618 (700-1) | 1220-1 $\frac{3}{8}$ | 1220-1 $\frac{1}{2}$ 618 (700-1 $\frac{1}{2}$) |

| | |
|------------------------------------|--------------------------|
| HIRL all Rwys | |
| REIL Rwys 13L and 31L | |
| TDZ/CL all Rwys except 13L and 31L | |
| FAF to MAP 5.5 NM | |
| Knots | 60 90 120 150 180 |
| Min:Sec | 5:30 3:40 2:45 2:12 1:50 |

SC-2, 15 MAY 2025 to 12 JUN 2025

SC-2, 15 MAY 2025 to 12 JUN 2025