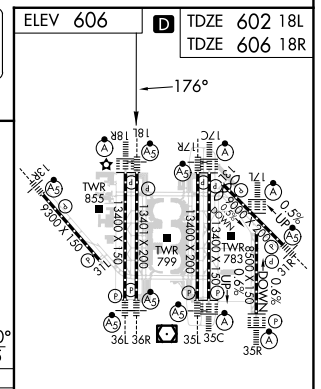
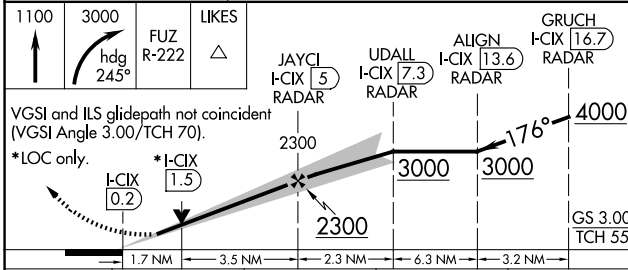
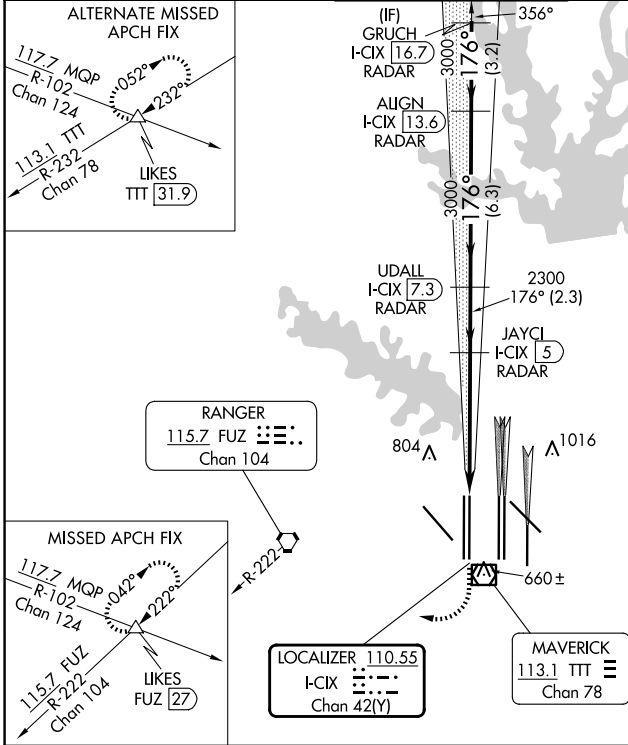


LOC/DME I-CIX 110.55 Chan 42 (Y)	APP CRS 176°	Rwy Idg 18L 13401 18R 13400	TDZE 602 606	Apt Elev 606 606
---	------------------------	---	-------------------------------	-----------------------------------

ILS or LOC RWY 18L

DALLAS-FORT WORTH INTL (DFW)

RADAR required for procedure entry. DME or RADAR required.		Rwy 18L MALSR	Rwy 18R ALSF-2	MISSED APPROACH: Climb to 1100, then climbing right turn to 3000 on heading 245° and FUZ VORTAC R-222 to LIKES INT/FUZ 27 DME and hold.	
Simultaneous approach authorized with Rwy 17L/C/R. For inop ALS, increase S-LOC 18L Cat C/D and Sidestep 18R Cat C/D visibility to 1¼ mile. Inop table does not apply to Sidestep 18R Cats A and B.					
D-ATIS ARR 123.775 DEP 135.925	LONE STAR APP CON 118.425	DFW TOWER 126.55 127.5 EAST 124.15 134.9 WEST		GND CON 121.65 121.8 EAST 121.85 WEST	CLNC DEL 128.25 CPDLC



CATEGORY	A	B	C	D
S-ILS 18L		802/18	200 (200-½)	
S-LOC 18L	1220/24	618 (700-½)	1220-1⅓	618 (700-1⅓)
SIDESTEP 18R	1220/50	614 (700-1)	1220-1⅓	1220-1½

HIRL all Rwys					
REIL Rwys 13L and 31L					
TDZ/CL all Rwys except 13L and 31L					
FAF to MAP 5.2 NM					
Knots	60	90	120	150	180
Min:Sec	5:12	3:28	2:36	2:05	1:44

SC-2, 15 MAY 2025 to 12 JUN 2025

SC-2, 15 MAY 2025 to 12 JUN 2025