

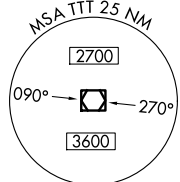
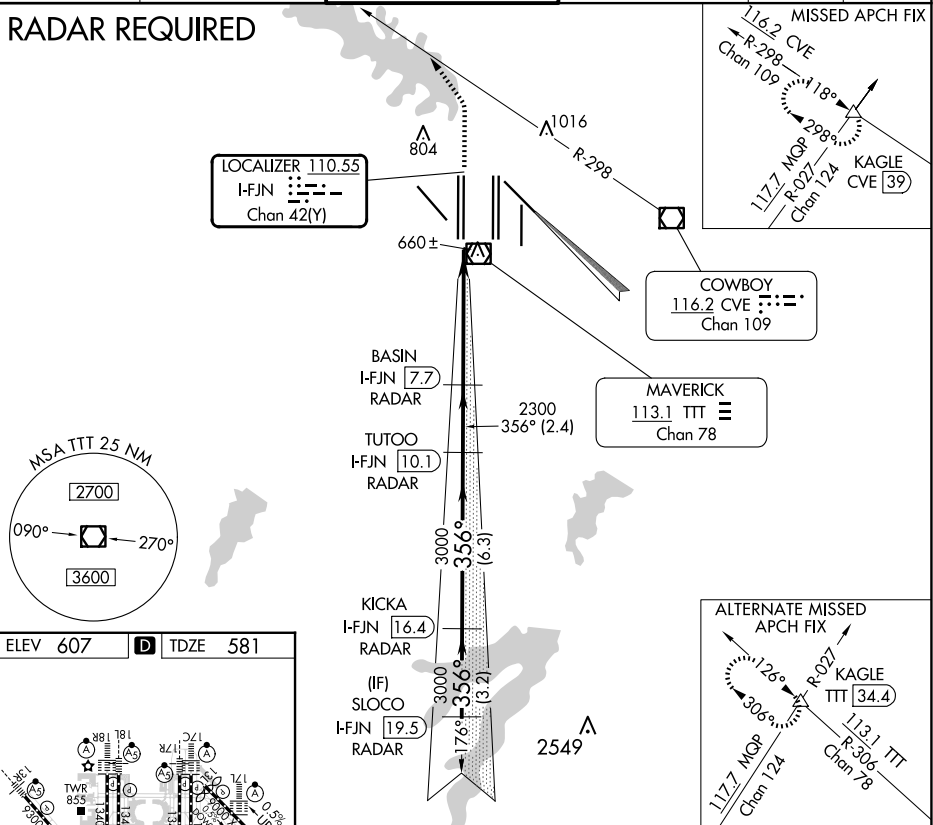
LOC/DME I-FJN 110.55 Chan 42 (Y)	APP CRS 356°	Rwy Idg TDZE Apt Elev	13401 581 607
--	------------------------	-----------------------------	--

CONVERGING ILS RWY 36R

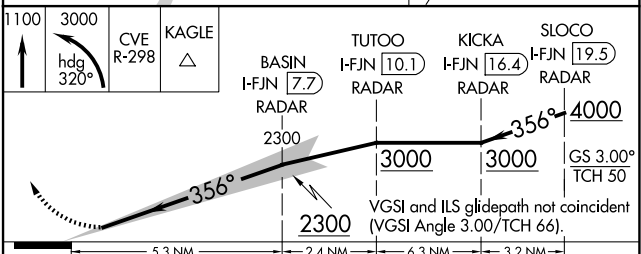
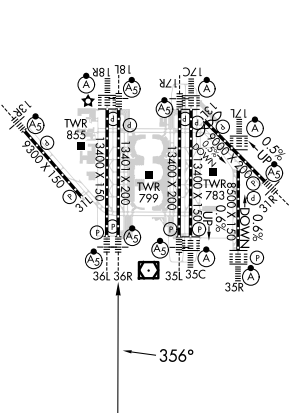
DALLAS-FORT WORTH INTL (DFW)

<p>Simultaneous approach authorized with Converging ILS Rwy 31R. DME or Radar required.</p>		<p>MALSR</p>	<p>MISSED APPROACH: Climb to 1100, then climbing left turn to 3000 on heading 320° and CVE VOR/DME R-298 to KAGLE INT/CVE 39 DME and hold.</p>		
D-ATIS ARR 123.775 DEP 135.925	LONE STAR APP CON 118.425	DFW TOWER 126.55 127.5 EAST 124.15 134.9 WEST	GND CON 121.65 121.8 EAST 121.85 WEST	CLNC DEL 128.25	CPDLC

RADAR REQUIRED



ELEV 607	D	TDZE 581
-----------------	----------	-----------------



CATEGORY	A	B	C	D
S-ILS 36R	781/18		200 (200-1/2)	

SC-2, 15 MAY 2025 to 12 JUN 2025

SC-2, 15 MAY 2025 to 12 JUN 2025