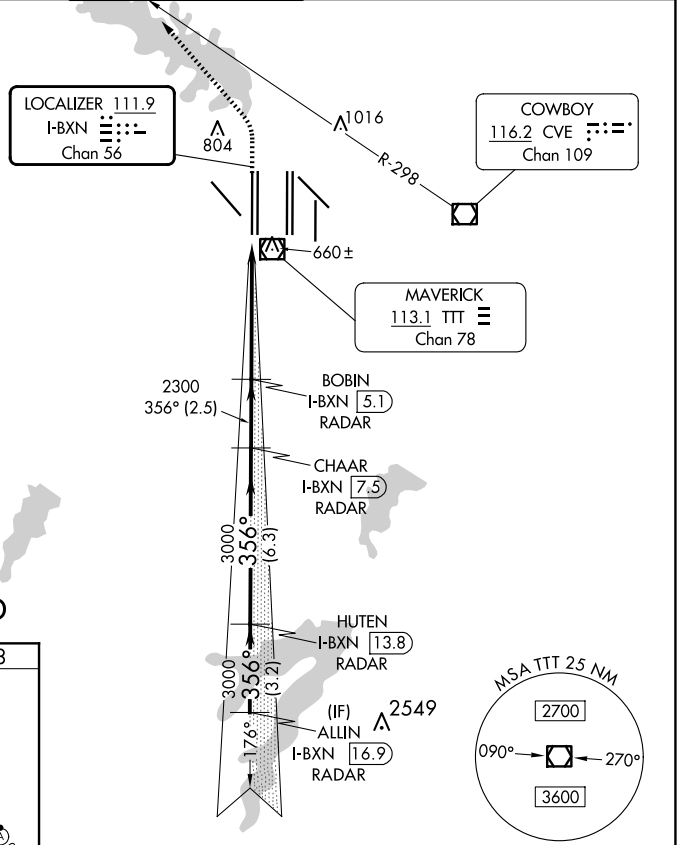
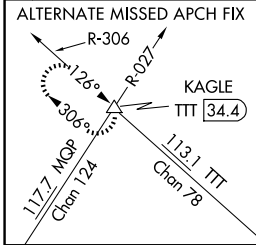
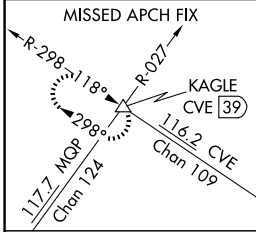


LOC/DME I-BXN 111.9 Chan 56	APP CRS 356°	Rwy Ldg TDZE Apt Elev 13400 588 607
-------------------------------------------------	------------------------	-------------------------------------------------------------------------

CONVERGING ILS RWY 36L

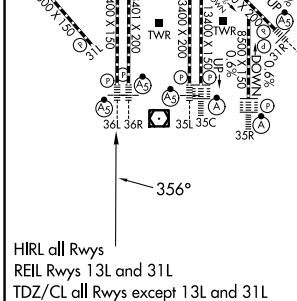
DALLAS-FORT WORTH INTL (DFW)

▼ DME or RADAR required. Simultaneous approach authorized with CONVERGING ILS RWY 31R.		MALSR 	MISSED APPROACH: Climb to 1100 then climbing left turn to 3000 on heading 315° and CVE VOR/DME R-298 to KAGLE INT/CVE VOR/DME 39 DME and hold.			
D-ATIS ARR 123.775 DEP 135.925	LONE STAR APP CON 118.425	DFW TOWER 126.55 127.5 EAST 124.15 134.9 WEST		GND CON 121.65 121.8 EAST 121.85 WEST	CLNC DEL 128.25	CPDLC



RADAR REQUIRED

ELEV 607	D	TDZE 588
-----------------	----------	-----------------



HIRL all Rwy's
REIL Rwy's 13L and 31L
TDZ/CL all Rwy's except 13L and 31L

1100	3000	CVE R-298	KAGLE				
↑	hdg 315°	△		BOBIN I-BXN [5.1] RADAR	CHAAR I-BXN [7.5] RADAR	HUTEN I-BXN [13.8] RADAR	ALLIN I-BXN [16.9] RADAR
VGSI and ILS glidepath not coincident (VGSI Angle 3.00/TCH 72).				2300	3000	3000	4000
				5.2 NM	2.5 NM	6.3 NM	3.2 NM
CATEGORY				A	B	C	D
S-ILS 36L				788/18 200 (200-1/2)			

DALLAS-FORT WORTH, TEXAS
Amdt 3 01FEB18

32°54' N-97°02' W

DALLAS-FORT WORTH INTL (DFW)

CONVERGING ILS RWY 36L

SC-2, 07 AUG 2025 to 04 SEP 2025

SC-2, 07 AUG 2025 to 04 SEP 2025