

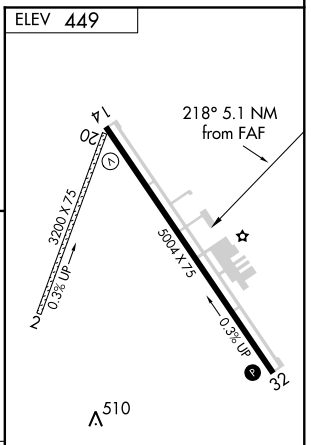
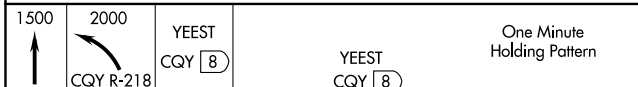
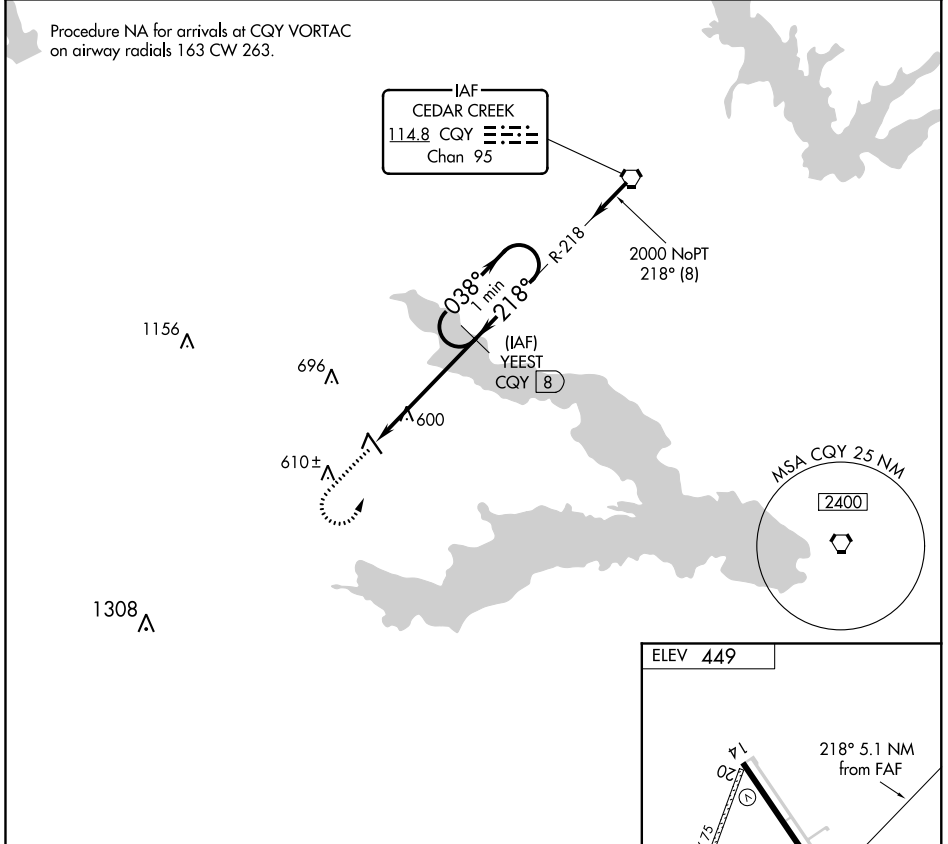
VORTAC CQY 114.8 Chan 95	APP CRS 218°	Rwy Idg TDZE Apt Elev	N/A N/A 449
--	------------------------	-----------------------------	--

VOR/DME-A

C DAVID CAMPBELL FIELD-CORSICANA MUNI (CRS)

NA	Procedure NA at night. Helicopter visibility reduction below 1 SM NA.	MISSED APPROACH: Climb to 1500 then climbing left turn to 2000 via CQY VORTAC R-218 to YEEST/CQY 8 DME and hold.
-----------	---	--

ASOS 120.675	FORT WORTH CENTER 135.25 265.1	UNICOM 122.8 (CTAF) 0
------------------------	--	---------------------------------



1500	2000	YEEST CQY 8	One Minute Holding Pattern
↑	↙ CQY R-218		

CATEGORY	A	B	C	D
CIRCLING	860-1 411 (500-1)	960-1 511 (600-1)	960-1½ 511 (600-1½)	1060-2 611 (700-2)

MIRL Rwy 14-32 0
REL Rwy 14 and 32

SC-2, 11 OCT 2018 to 08 NOV 2018

SC-2, 11 OCT 2018 to 08 NOV 2018

VOR/DME-A