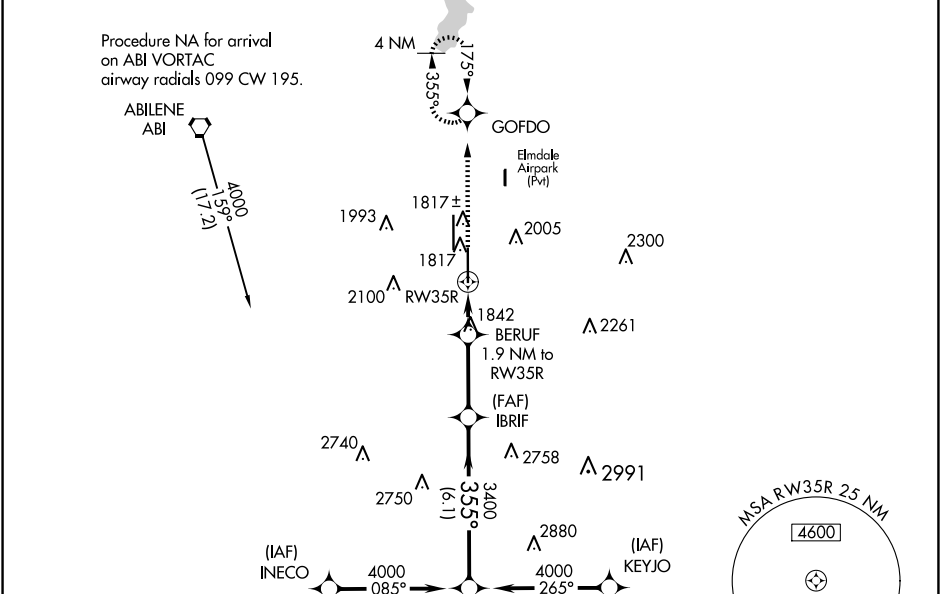


WAAS CH <b>97517</b> <b>W35A</b>	APP CRS <b>355°</b>	Rwy Idg TDZE Apt Elev	<b>7198</b> <b>1776</b> <b>1791</b>
--	------------------------	-----------------------------	---

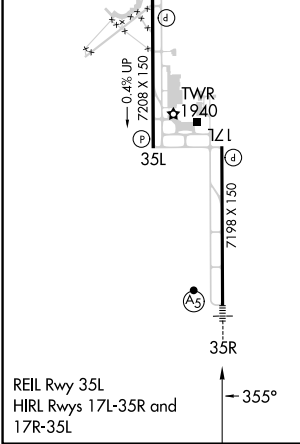
# RNAV (GPS) RWY 35R

ABILENE RGNL (ABI)

RNP APCH.		MALSR	MISSED APPROACH: Climb to 4000 direct GOFDO and hold, continue climb-in-hold to 4000.
<p>For uncompensated Baro-VNAV systems, LNAV/VNAV NA below -18°C or above 45°C. For inop ALS, increase LPV Cat E visibility to RVR 4000, LNAV/VNAV all Cats to RVR 6000, and LNAV Cats C/D/E to 1¾ SM. ** RVR 1800 authorized with use of FD or AP or HUD to DA.</p>			
ATIS <b>118.25</b>	ABILENE APP CON <b>125.0 338.3 (EAST)</b> <b>127.2 282.3 (WEST)</b>	ABILENE TOWER <b>120.1 257.8</b>	GND CON <b>121.7 348.6</b>



ELEV 1791	<b>D</b>	TDZE 1776
-----------	----------	-----------



4000	GOFDO	IBRIF	NILSE		
*LNAV only.		BERUF 1.9 NM to RW35R	4000		
*1.3 NM to RW35R		*2440	GP 3.00° TCH 58		
-1.3 NM		0.6	3 NM		
		6.1 NM			
CATEGORY	A	B	C	D	E
LPV	DA**	1976/24 200 (200-½)			
LNAV/VNAV	DA	2189/40 413 (400-¾)			2189/50 413 (400-1)
LNAV MDA	2260/24 484 (500-½)		2260/50 484 (500-1)		
<b>C</b> CIRCLING	2300-1	2320-1	2420-1¾	2460-2	2620-3
	509 (600-1)	529 (600-1)	629 (700-1¾)	669 (700-2)	829 (900-3)