

LOC I- EU	APP CRS	Rwy Idg	8002
108.3	355°	TDZE	1147
		Apt Elev	1167

ILS or LOC RWY 35

ENID WOODRING RGNL (WDG)

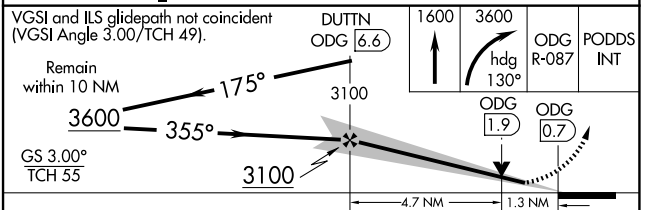
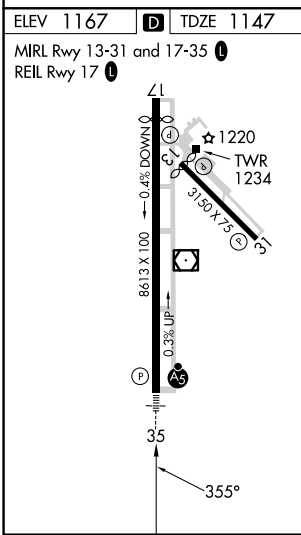
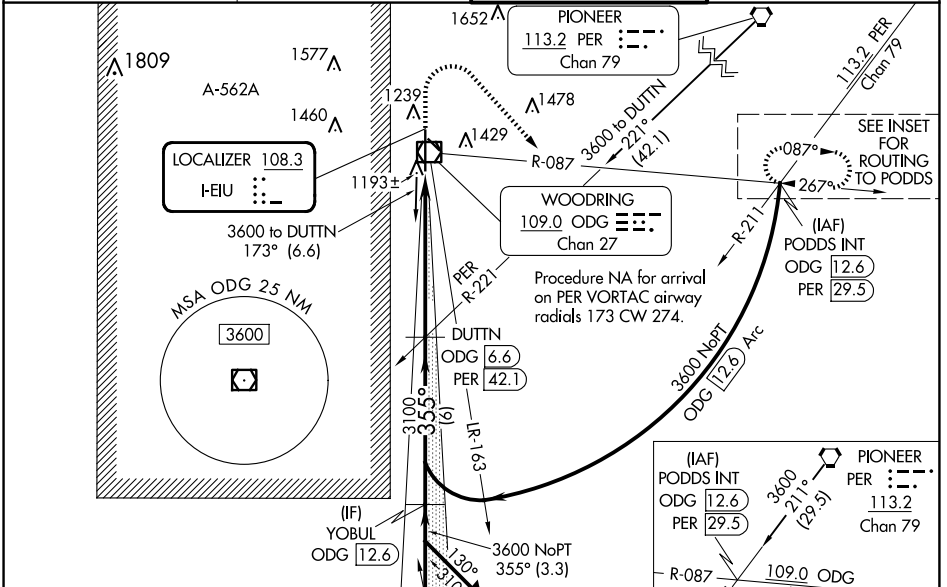
DME required.

⚠ DME from ODG VOR/DME. Simultaneous reception of I-EIU and ODG DME required. VDP NA when using GOK altimeter setting. Circling Rwy 13 NA at night. Procedure turn NA for Cat E. When local altimeter setting not received, use GOK altimeter setting and increase S-ILS 35 DA to 1445 feet; increase all MDAs 100 feet and S-LOC 35 visibility Cat C/D/E 1/2 SM, and Circling visibility Cat C/D 1/2 SM. For Inop ALS, increase S-ILS 35 Cat E visibility to 3/4 SM, increase S-LOC 35 Cat E visibility to 1 3/8 SM.

MALSR
AS

MISSED APPROACH:
Climb to 1600 then climbing right turn to 3600 on heading 130° and ODG VOR/DME R-087 to PODDS INT/ 12.6 DME and hold.

AWOS-3PT 123.725	VANCE APP CON * 121.3 346.325	WOODRING TOWER * 118.9 (CTAF) 0 257.95	GND CON 121.925
----------------------------	---	--	---------------------------



CATEGORY	A	B	C	D	E
S-ILS 35	1347-1/2 200 (200-1/2)				
S-LOC 35	1600-1/2	453 (500-1/2)	1600-3/8 453 (500-3/8)		
CIRCLING	1760-1	593 (600-1)	1820-1 3/4	1880-2 1/4	2000-3
			653 (700-1 3/4)	713 (800-2 1/4)	833 (900-3)

SC-1, 15 MAY 2025 to 12 JUN 2025

SC-1, 15 MAY 2025 to 12 JUN 2025