

| | | |
|--|------------------------|---|
| WAAS Ch 49199 W31A | APP CRS 310° | Rwy Idg 4559 TDZE 390 Apt Elev 390 |
|--|------------------------|---|

RNAV (GPS) RWY 31

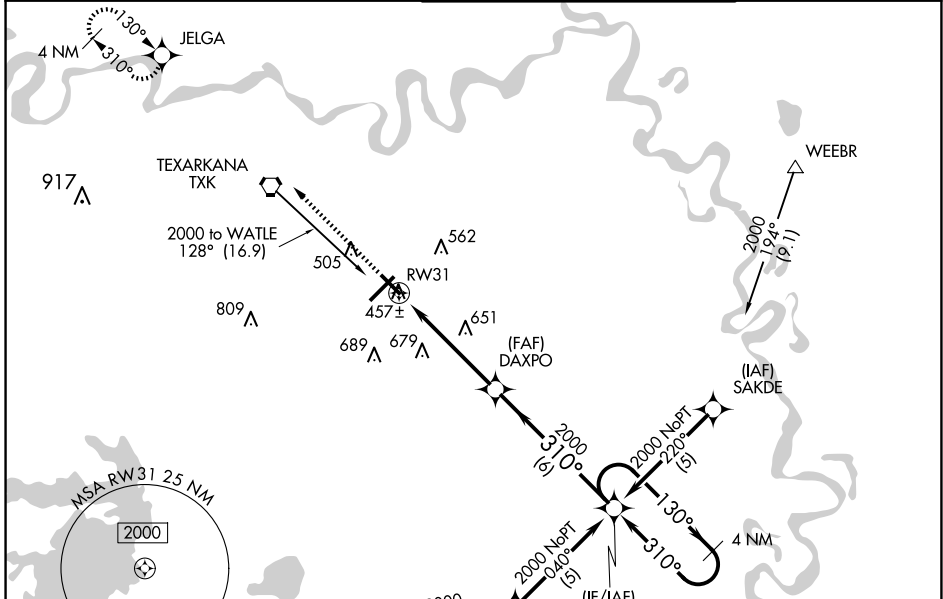
TEXARKANA RGNL-WEBB FLD (TXK)

RNP APCH-GPS.

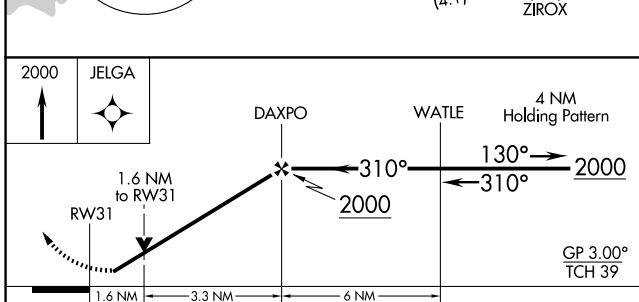
▼ Rwy 31 helicopter visibility reduction below 3/4 SM NA. For uncompensated Baro-VNAV systems, LNAV/VNAV NA below -15°C or above 54°C. When local altimeter setting not received, use De Queen altimeter setting and increase all DA/MDA 100 feet, increase LPV and LNAV/VNAV all Cats, and LNAV Cat C and D visibility 1/4 SM, and Circling Cat C and D visibility 1/4 SM. Baro-VNAV and VDP NA when using De Queen altimeter setting.

▲ MISSED APPROACH: Climb to 2000 direct JELGA and hold.

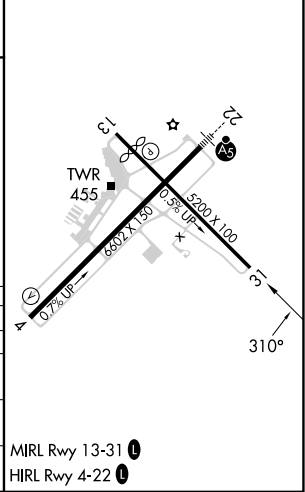
| | | | |
|----------------------|---|---|---------------------------|
| ATIS 120.2 | FORT WORTH CENTER 123.925 269.475 | TEXARKANA TOWER★ 123.875 (CTAF) 0 235.625 | GND CON 119.225 |
|----------------------|---|---|---------------------------|



| | |
|----------|----------|
| ELEV 390 | TDZE 390 |
|----------|----------|



| | | | | |
|--------------|---------------------------|----------------------------|----------------------------|---|
| CATEGORY | A | B | C | D |
| LPV DA | 645-1 255 (300-1) | | | |
| LNAV/VNAV DA | 707-1 1/4 317 (400-1 1/4) | | | |
| LNAV MDA | 920-1 530 (600-1) | 920-1 1/2 530 (600-1 1/2) | 920-1 3/4 530 (600-1 3/4) | |
| CIRCLING | 920-1 530 (600-1) | 1000-1 3/4 610 (700-1 3/4) | 1080-2 1/4 690 (700-2 1/4) | |



SC-1, 15 MAY 2025 to 12 JUN 2025

SC-1, 15 MAY 2025 to 12 JUN 2025