

WAAS Ch 87099 W13A	APP CRS 130°	Rwy Idg 4559 TDZE 388 Apt Elev 390
----------------------------------------	------------------------	---------------------------------------------------------------

RNAV (GPS) RWY 13

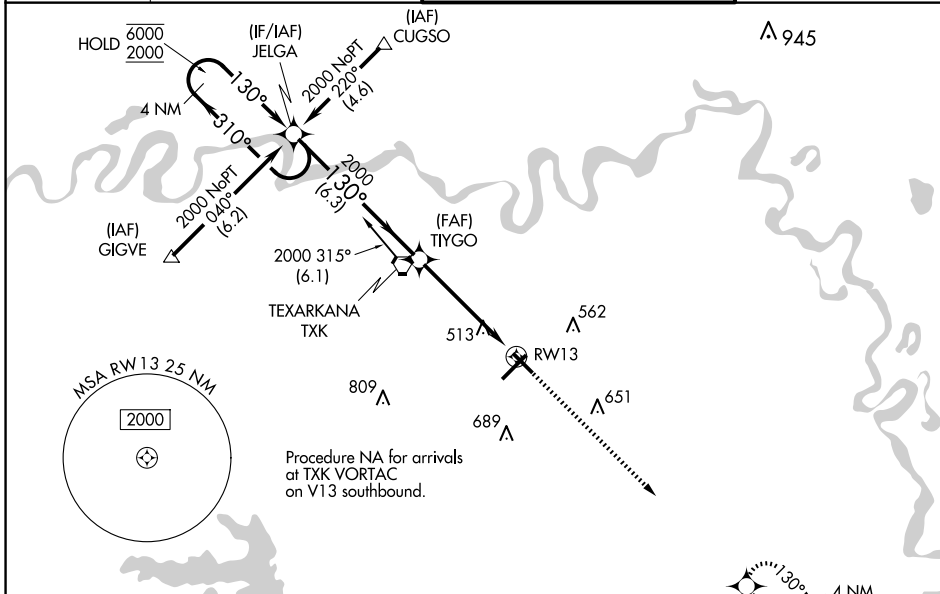
TEXARKANA RGNL-WEBB FLD (TXK)

RNP APCH - GPS.

⚠ Baro-VNAV and VDP NA when using De Queen altimeter setting. Rwy 13 helicopter visibility reduction below $\frac{3}{4}$ SM NA. For uncompensated Baro-VNAV systems, LNAV/VNAV NA below -1.5°C or above 54°C . When local altimeter setting not received, use De Queen altimeter setting and increase LPV DA to 748 feet and all Cats visibility $\frac{1}{4}$ SM, LNAV/VNAV DA to 868 feet all Cats visibility $\frac{3}{8}$ SM, and all MDAs 100 feet and LNAV and Circling Cats C/D visibility $\frac{1}{4}$ SM.

MISSED APPROACH:
Climb to 2000 direct WATLE and hold.

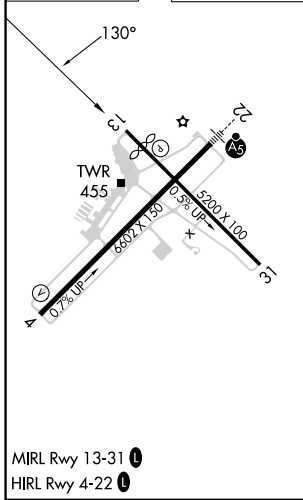
ATIS 120.2	FORT WORTH CENTER 123.925 269.475	TEXARKANA TOWER* 123.875 (CTAF) 235.625	GND CON 119.225
----------------------	---------------------------------------------	----------------------------------------------------------	---------------------------



SC-1, 15 MAY 2025 to 12 JUN 2025

SC-1, 15 MAY 2025 to 12 JUN 2025

ELEV 390	D	TDZE 388
-----------------	----------	-----------------



MIRL Rwy 13-31 **0**
HIRL Rwy 4-22 **0**

4 NM Holding Pattern		VGSI and RNAV glidepath not coincident (VGSI Angle 3.00/TCH 48).		2000	WATLE
6000 2000		310° 130°		2000	↑
GP 3.00° TCH 54		6.3 NM		1.2 NM to RW13	
CATEGORY		A	B	C	D
LPV DA		648- $\frac{3}{4}$		260 (300- $\frac{3}{4}$)	
LNAV/VNAV DA		768-1		380 (400-1)	
LNAV MDA		780-1 392 (400-1)		780-1 $\frac{1}{8}$ 392 (400-1 $\frac{1}{8}$)	
CIRCLING		820-1 430 (500-1)	900-1 510 (600-1)	1000-1 $\frac{3}{4}$ 610 (700-1 $\frac{3}{4}$)	1080-2 $\frac{1}{4}$ 690 (700-2 $\frac{1}{4}$)