

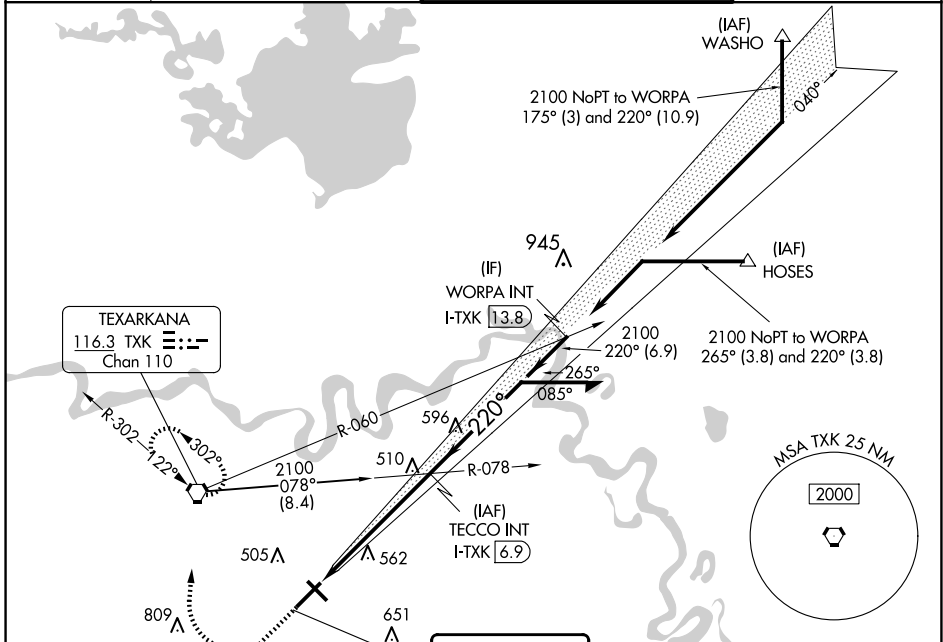
LOC/DME I-TXK 111.9 Chan 56	APP CRS 220°	Rwy Idg 6602 TDZE 384 Apt Elev 390
---	------------------------	---

ILS or LOC RWY 22

TEXARKANA RGNL-WEBB FLD (TXK)

<p>For inop ALS, increase S-LOC 22 Cats C/D visibility to 1 SM.</p>	<p>MALSR</p>	<p>MISSED APPROACH: Climb to 900 then climbing right turn to 2000 direct TXK VORTAC and hold, continue climb-in-hold to 2000.</p>
---	--------------	---

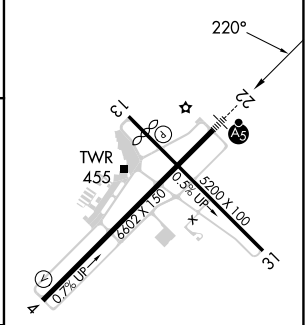
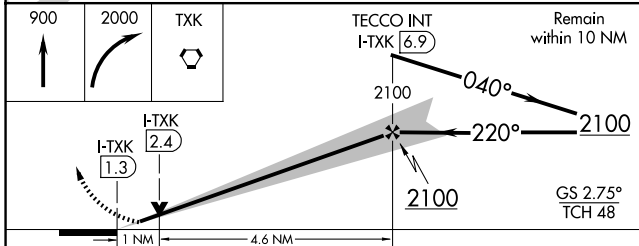
ATIS 120.2	FORT WORTH CENTER 123.925 269.475	TEXARKANA TOWER* 123.875 (CTAF) 0 235.625	GND CON 119.225
----------------------	---	---	---------------------------



TEXARKANA
116.3 TXK
Chan 110

LOCALIZER 111.9
I-TXK
Chan 56

ELEV 390	TDZE 384
----------	----------



CATEGORY	A	B	C	D
S-ILS 22	584-1/2		200 (200-1/2)	
S-LOC 22	760-1/2 376 (400-1/2)		760-5/8 376 (400-5/8)	
CIRCLING	820-1 430 (500-1)	900-1 510 (600-1)	1000-1 3/4 610 (700-1 3/4)	1080-2 1/4 690 (700-2 1/4)

MIRL Rwy 13-31	
HIRL Rwy 4-22	
FAF to MAP 5.6 NM	
Knots	60 90 120 150 180
Min:Sec	5:36 3:44 2:48 2:14 1:52

SC-1, 15 MAY 2025 to 12 JUN 2025

SC-1, 15 MAY 2025 to 12 JUN 2025