

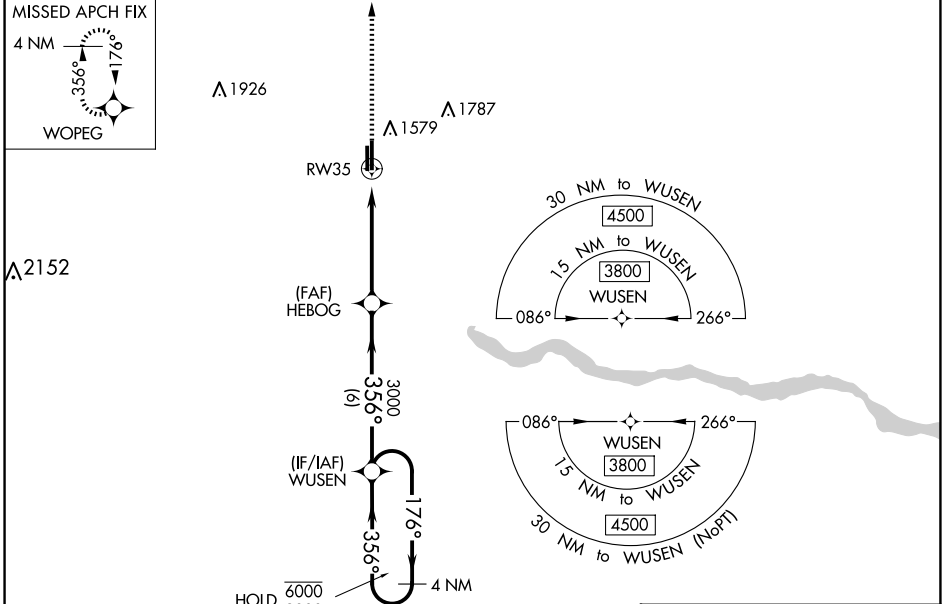
WAAS CH 97443 W35A	APP CRS 356°	Rwy Idg TDZE 1417 Apt Elev 1420
--	------------------------	---

RNAV (GPS) RWY 35

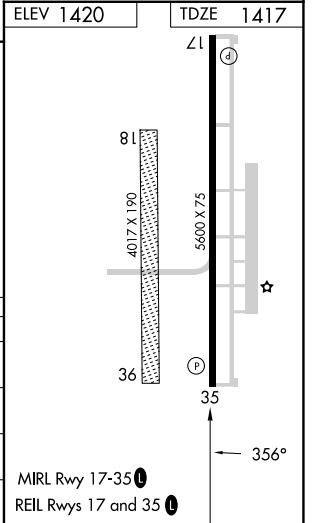
EL RENO RGNL (RQO)

RNP APCH-GPS.	MISSED APPROACH: Climb to 3800 direct WOPEG and hold.
<p>▼ Rwy 35 helicopter visibility reduction below 1 SM NA. Straight-in Rwy 35 NA at night, Circling Rwy 35 NA at night. For uncompensated Baro-VNAV systems, LNAV/VNAV NA below -17°C or above 54°C. Circling NA to Rwy 18 and 36.</p>	

AWOS-3 118.475	OKE CITY APP CON 124.6 266.8	UNICOM 122.8 (CTAF) 0
--------------------------	--	---------------------------------



3800	WOPEG	4 NM Holding Pattern		
↑	✦			
CATEGORY	A	B	C	D
LPV DA		1667-1	250 (300-1)	
LNAV/ VNAV DA		1667-1	250 (300-1)	
LNAV MDA	1800-1	383 (400-1)	1800-1 $\frac{1}{8}$	383 (400-1 $\frac{1}{8}$)
C CIRCLING	1900-1	480 (500-1)	2140-2 720 (800-2)	2140-2 $\frac{1}{4}$ 720 (800-2 $\frac{1}{4}$)



SC-1, 15 MAY 2025 to 12 JUN 2025

SC-1, 15 MAY 2025 to 12 JUN 2025