

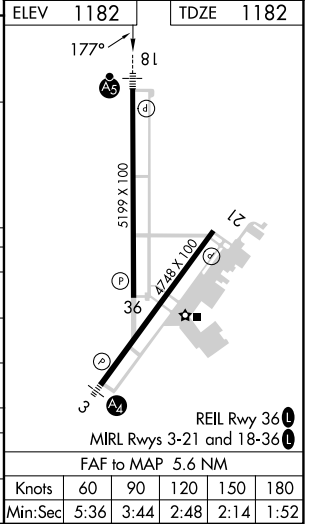
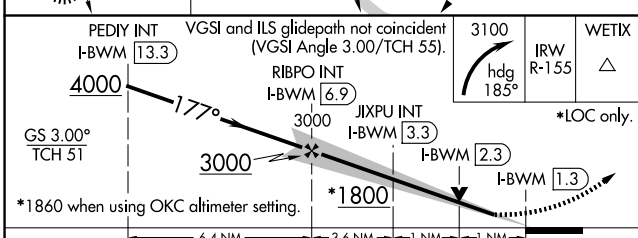
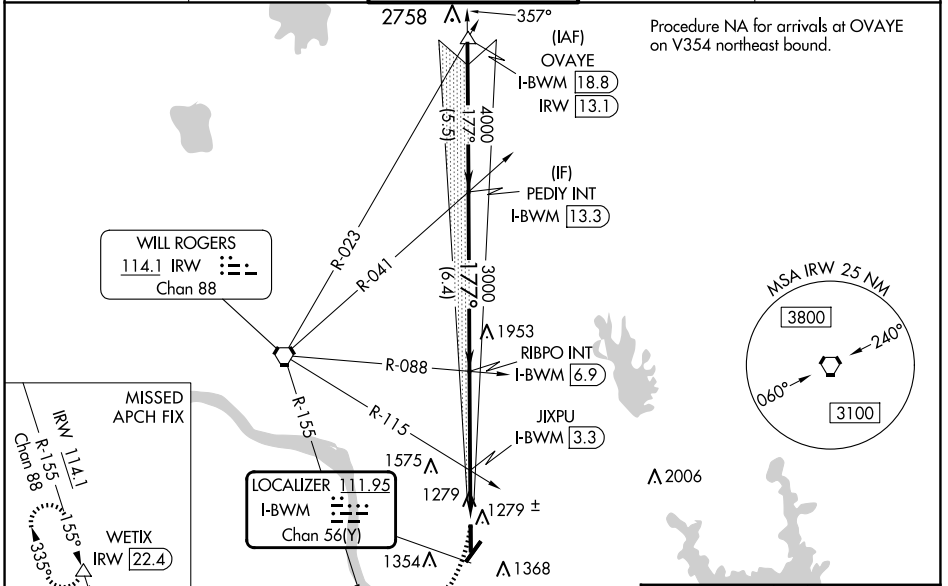
LOC/DME I-BWMM <b>111.95</b> Chan <b>56(Y)</b>	APP CRS <b>177°</b>	Rwy Idg <b>5199</b> TDZE <b>1182</b> Apt Elev <b>1182</b>
--	------------------------	---

# ILS or LOC RWY 18

UNIVERSITY OF OKLAHOMA WESTHEIMER (OUN)

DME required.	MALSR	MISSED APPROACH: Climbing right turn to 3100 on heading 185° and IRW VORTAC R-155 to WETIX/IRW VORTAC 22.4 DME and hold.
<p>▼ Circling NA southeast of Rwy 3-21. VDP NA when using OKC altimeter setting.</p> <p>▲ When local altimeter setting not received, use OKC altimeter setting: increase S-ILS 18 DA to 1423 feet; increase all MDAs 60 feet, S-LOC 18 visibility Cats C and D ½ SM, and Circling visibility Cats C and D ¼ SM; increase JIXPU fix minimums S-LOC 18 visibility Cats C and D ½ SM, and Circling visibility Cats C and D ¼ SM.</p>		

AWOS-3PT <b>119.55</b>	OKE CITY APP CON <b>120.45 288.325</b>	WESTHEIMER TOWER★ <b>118.0 (CTAF) 0</b>	GND CON <b>121.6</b>	UNICOM <b>122.95</b>
---------------------------	---	--	-------------------------	-------------------------



CATEGORY	A	B	C	D
S-ILS 18	1382-½		200 (200-½)	
S-LOC 18	1800-½	618 (700-½)	1800-1¾	618 (700-1¾)
<b>C</b> CIRCLING	1800-1	618 (700-1)	1940-2¼ 758 (800-2¼)	1940-2½ 758 (800-2½)
JIXPU FIX MINIMUMS (DUAL VOR RECEIVERS OR DME REQUIRED)				
S-LOC 18	1540-½	358 (400-½)	1540-5/8	358 (400-5/8)
<b>C</b> CIRCLING	1660-1	478 (500-1)	1940-2¼ 758 (800-2¼)	1940-2½ 758 (800-2½)

SC-1, 15 MAY 2025 to 12 JUN 2025

SC-1, 15 MAY 2025 to 12 JUN 2025