

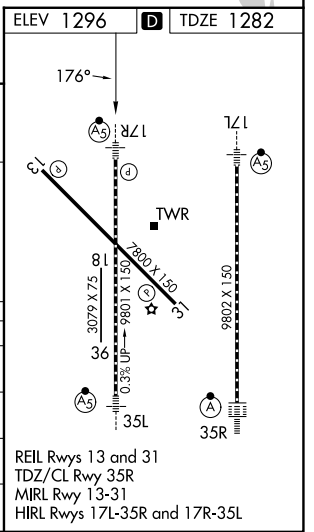
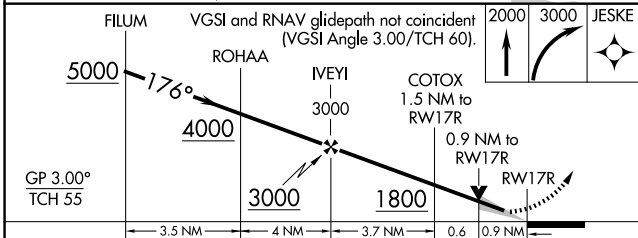
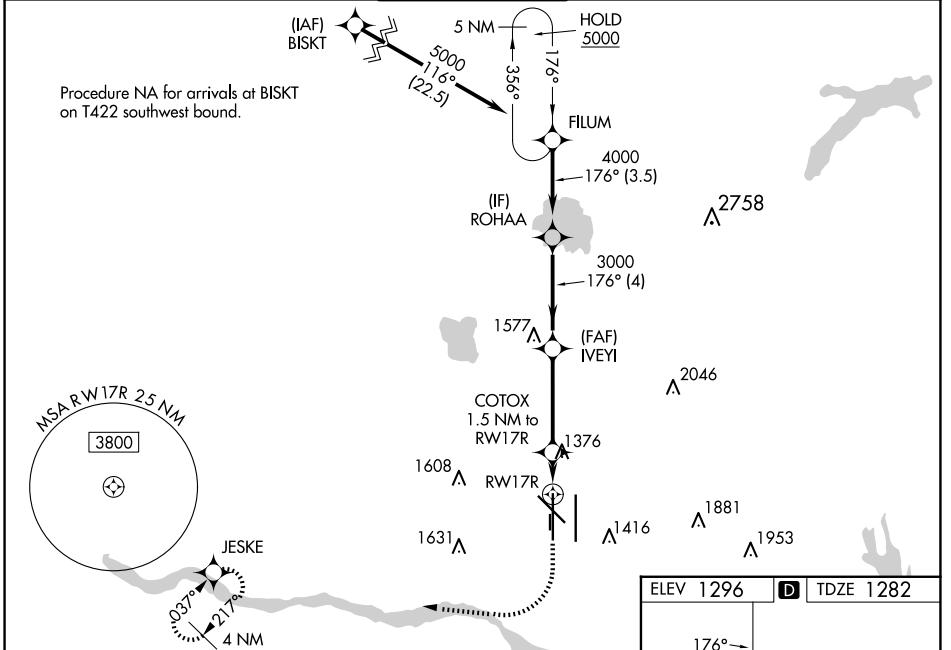
WAAS CH <b>50102</b> <b>W17A</b>	APP CRS <b>176°</b>	Rwy Idg TDZE Apt Elev	<b>9800</b> <b>1282</b> <b>1296</b>
----------------------------------------	------------------------	-----------------------------	-------------------------------------------

# RNAV (GPS) Y RWY 17R

OKC WILL ROGERS INTL (OKC)

RNP APCH-GPS.		MALSR	MISSED APPROACH: Climb to 2000 then climbing right turn to 3000 direct JESKE and hold.
Simultaneous approach authorized. LNAV procedure NA during simultaneous operations. Use of FD or AP required during simultaneous operations. For uncompensated Baro-VNAV systems, LNAV/VNAV NA below -12°C or above 54°C. For inop ALS, increase LNAV/VNAV all Cats visibility to RVR 4500, and LNAV Cats C and D visibility to RVR 5500. * RVR 1800 authorized with use of FD or AP or HUD to DA.		ASR	

D-ATIS <b>125.85</b>	OKE CITY APP CON <b>124.6 266.8</b>	<b>ROGERS TOWER</b> <b>119.35 269.45</b>	GND CON <b>121.9 348.6</b>	CLNC DEL <b>124.35</b>
-------------------------	----------------------------------------	---------------------------------------------	-------------------------------	---------------------------



CATEGORY	A	B	C	D
LPV DA*	1482/24		200 (200-½)	
LNAV/VNAV DA	1550/24		268 (300-½)	
LNAV MDA	1640/24		1640/30	
	358 (400-½)		358 (400-¾)	
<b>C</b> CIRCLING	1740-1 444 (500-1)	1760-1 464 (500-1)	1960-1¾ 664 (700-1¾)	2000-2¼ 704 (800-2¼)

SC-1, 07 AUG 2025 to 04 SEP 2025

SC-1, 07 AUG 2025 to 04 SEP 2025