

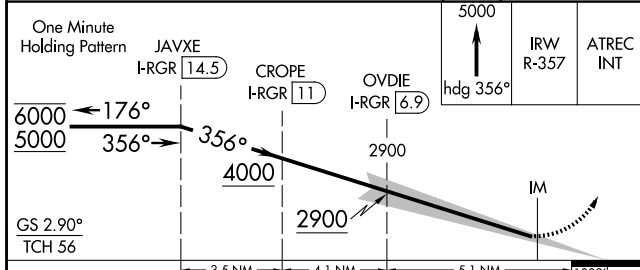
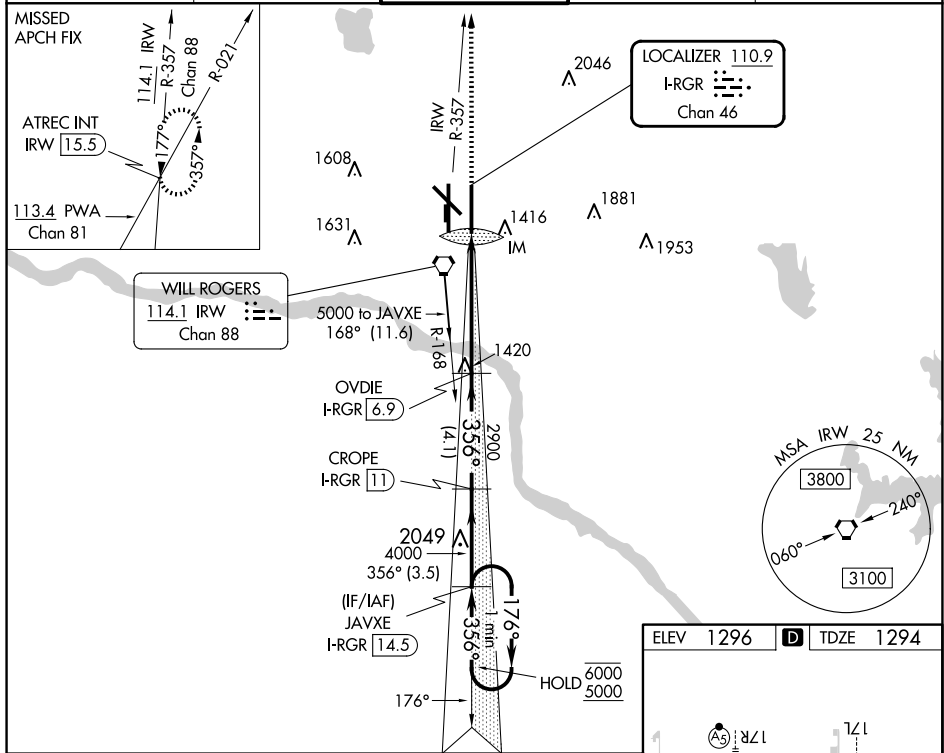
LOC/DME I-RGR <b>110.9</b> Chan <b>46</b>	APP CRS <b>356°</b>	Rwy Idg <b>9802</b> TDZE <b>1294</b> Apt Elev <b>1296</b>
---	------------------------	---

# ILS RWY 35R (CAT II)

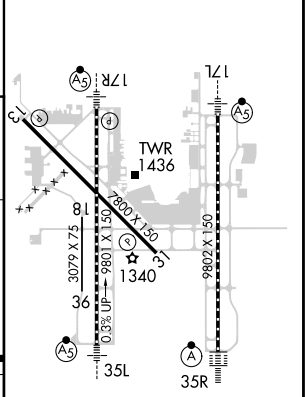
OKC WILL ROGERS INTL (OKC)

DME required. ASR Simultaneous approach authorized.		ALSF-2	MISSED APPROACH: Climb to 5000 on heading 356° and on IRW VORTAC R-357 to ATREC INT/IRW 1.5.5 DME and hold, continue climb-in-hold to 5000.	
--	--	--------	---	--

D-ATIS <b>125.85</b>	OKE CITY APP CON <b>124.6 266.8</b>	<b>ROGERS TOWER</b> <b>119.35 269.45</b>	GND CON <b>121.9 348.6</b>	CLNC DEL <b>124.35</b>
-------------------------	--	---	-------------------------------	---------------------------



ELEV 1296	<b>D</b> TDZE 1294
-----------	--------------------



CATEGORY	A	B	C	D
S-ILS 35R	RA 121/12 100 DA 1394			
<b>CATEGORY II ILS - SPECIAL AIRCREW &amp; AIRCRAFT CERTIFICATION REQUIRED</b>				

REIL Rws 13 and 31
TDZ/CL Rwy 35R
MRL Rwy 13-31
HIRL Rws 17L-35R and 17R-35L

SC-1, 15 MAY 2025 to 12 JUN 2025

SC-1, 15 MAY 2025 to 12 JUN 2025