

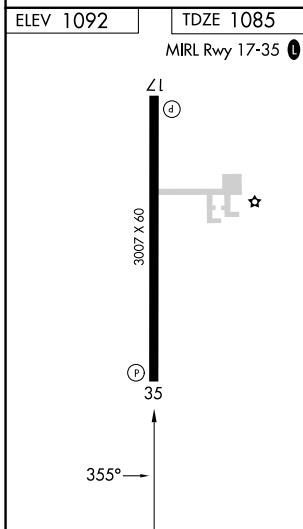
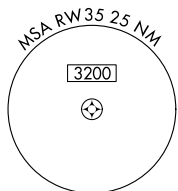
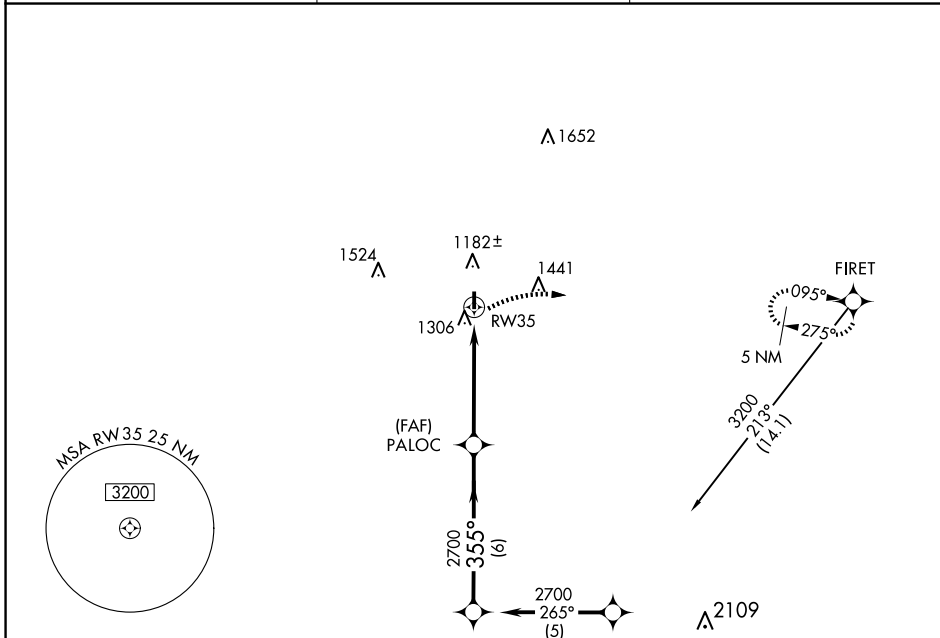
APP CRS 355°	Rwy Idg 3007
	TDZE 1085
	Apt Elev 1092

RNAV (GPS) RWY 35

MEDFORD MUNI (O53)

RNP APCH.	MISSED APPROACH: Climbing right turn to 5000 direct FIRET and hold.
▲ NA Use Ponca City Rgnl altimeter setting. Procedure NA at night.	

PNC ASOS 134.075	VANCE APP CON* 118.075 273.475	UNICOM 122.8 (CTAF)
----------------------------	--	-------------------------------



5000	FIRET	PALOC	INERE	Procedure Turn NA
		2700	2700	
RW35		355°		
		3.00°		
		TCH 40		
		VGSi and descent angles not coincident (VGSi Angle 3.51/TCH 33).		
		4.9 NM		6 NM
CATEGORY	A	B	C	D
LNAV MDA	1700-1¼	608 (700-1¼)	NA	
CIRCLING	1740-1¼ 648 (700-1¼)	1840-1¼ 748 (800-1¼)	NA	

SC-1, 15 MAY 2025 to 12 JUN 2025

SC-1, 15 MAY 2025 to 12 JUN 2025