

APP CRS 214°	Rwy Idg 2812
	TDZE 538
	Apt Elev 538

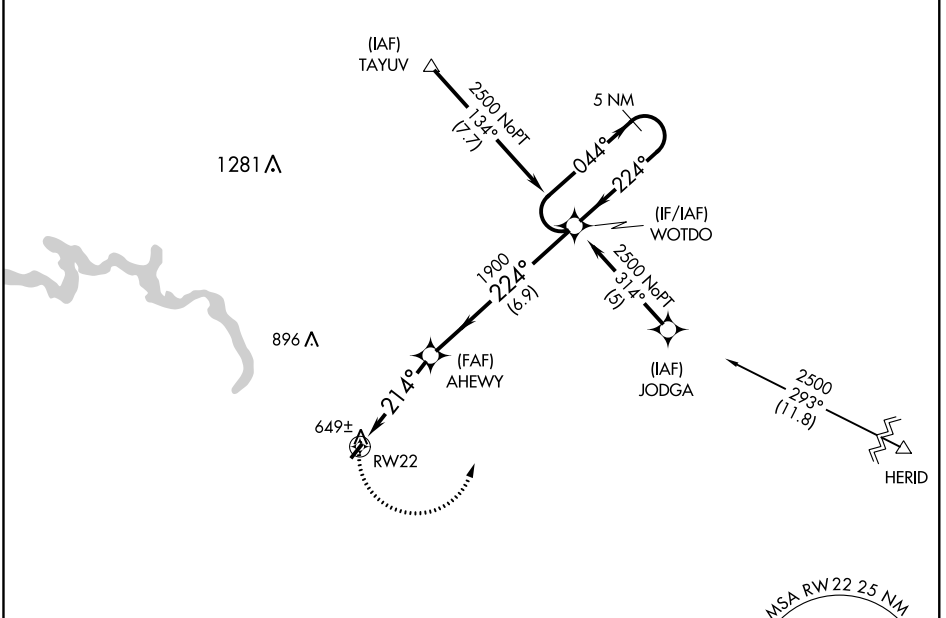
RNAV (GPS) RWY 22

MALVERN MUNI (M78)

▼ DME/DME RNP-0.3 NA. Use Hot Springs altimeter setting; when not received, use Bill and Hillary Clinton National/Adams Field altimeter setting and increase all MDAs 80 feet. Helicopter visibility reduction below 1 SM not authorized. Procedure NA at night.

MISSED APPROACH: Climbing left turn to 2500 direct WOTDO and hold.

MEMPHIS CENTER 128.475 377.15	UNICOM 122.8 (CTAF) 0
---	---------------------------------



SC-1, 24 MAY 2018 to 21 JUN 2018

SC-1, 24 MAY 2018 to 21 JUN 2018

ELEV 538	TDZE 538
----------	----------

MIRA Rwy 4-22 0

2500 WOTDO	Visual Segment - Obstacles.	5 NM Holding Pattern		
CATEGORY	A	B	C	D
LNAV MDA	960-1	422 (500-1)	NA	
CIRCLING	1000-1	462 (500-1)	NA	