

RNAV (GPS) RWY 36

ALMYRA MUNI (M73)

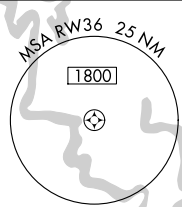
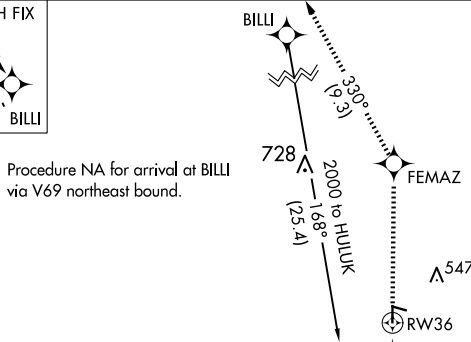
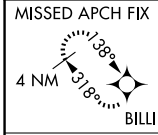
| | | |
|-------------|----------|-------------|
| APP CRS | Rwy Idg | 3494 |
| 358° | TDZE | 210 |
| | Apt Elev | 210 |

RNP APCH.

Use Stuttgart altimeter setting; if not received, use Pinebluff
 NA Rgnl/Girder Fld altimeter setting and increase all MDAs 40 feet.

MISSED APPROACH: Climb to 2000 direct FEMAZ and via 330° track to BILLI and hold.

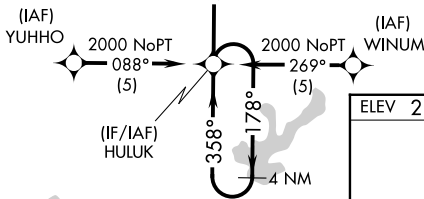
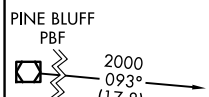
| | | | |
|--------------------------------|--|---------------------------|-------------------------------|
| SGT AWOS-3PT 119.025 | LITTLE ROCK APP CON 119.85 353.6 | CLNC DEL 119.85 | UNICOM 123.0 (CTAF) |
|--------------------------------|--|---------------------------|-------------------------------|



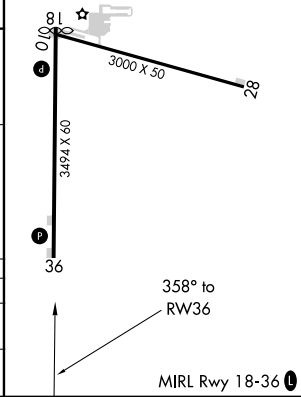
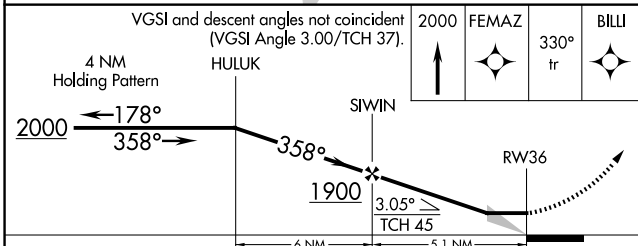
Procedure NA for arrival at BILLI via V69 northeast bound.

Procedure NA for arrival on UJM VOR/DME airway radials 193 CW 274.

Procedure NA for arrival on PBF VOR/DME airway radials 034 CW 128.



| | |
|----------|----------|
| ELEV 210 | TDZE 210 |
|----------|----------|



| CATEGORY | A | B | C | D |
|----------|----------------------|----------------------|------------------------|----|
| LNVA MDA | 680-1 | 470 (500-1) | 680-1¼ 470 (500-1¼) | NA |
| CIRCLING | 680-1 470 (500-1) | 940-1 730 (800-1) | 940-2 730 (800-2) | NA |

SC-1, 07 AUG 2025 to 04 SEP 2025

SC-1, 07 AUG 2025 to 04 SEP 2025