

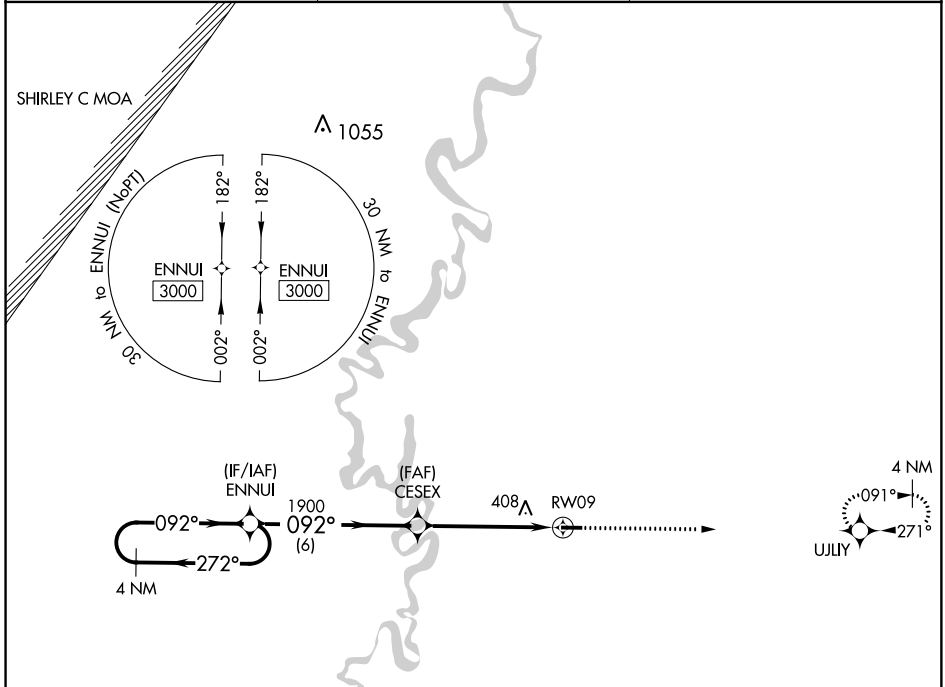
APP CRS <b>092°</b>	Rwy Idg TDZE Apt Elev	<b>N/A</b> <b>N/A</b> <b>200</b>
------------------------	-----------------------------	--

**RNAV (GPS)-A**  
WOODRUFF COUNTY (M64)

**NA** Rwy 9, 27 helicopter visibility reduction below 1 SM NA. DME/DME RNP-0.3 NA. Procedure NA at night. Use Newport altimeter setting.

MISSED APPROACH: Climb to 3000 direct UJLY and hold.

NEWPORT RGNL AWOS-3PT <b>118.15</b>	MEMPHIS CENTER <b>135.3 335.8</b>	CTAF <b>122.9 0</b>
--	--------------------------------------	------------------------



ELEV	200
------	-----



4 NM Holding Pattern	ENNUUI	Visual Segment - Obstacles.	3000	UJLY
3000	← 272°	092° →	092°	092° to RW09
		CESEX	1900	3797 X.75
		RW09		27
	6 NM	5.2 NM		

CATEGORY	A	B	C	D
<b>C</b> CIRCLING	740-1 540 (600-1)	820-1 620 (700-1)	NA	

MIRL Rwy 9-27 0