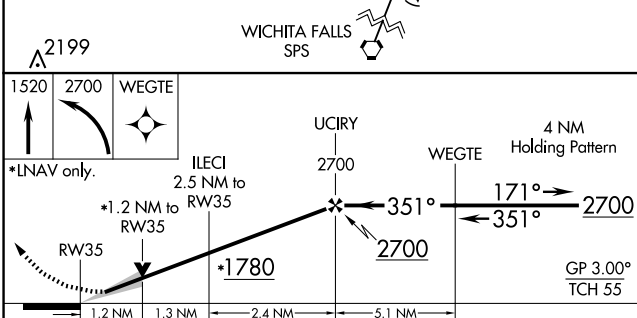
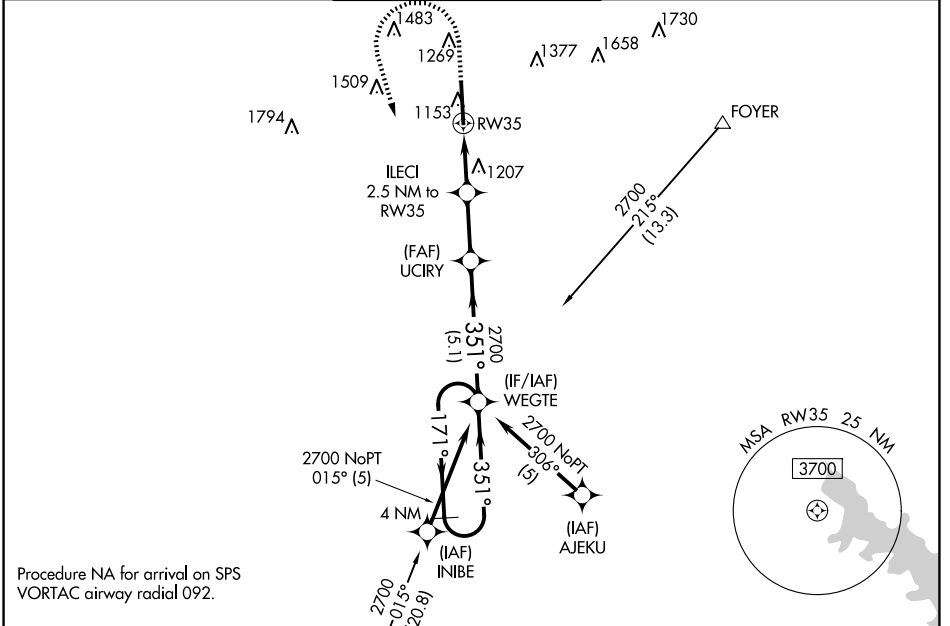


|  |                        |                         |
|--|------------------------|-------------------------|
| WAAS<br><b>CH 77640</b><br><b>W35A</b> | APP CRS<br><b>351°</b> | Rwy Idg<br><b>8599</b>  |
|  |                        | TDZE<br><b>1089</b>     |
|  |                        | Apt Elev<br><b>1110</b> |

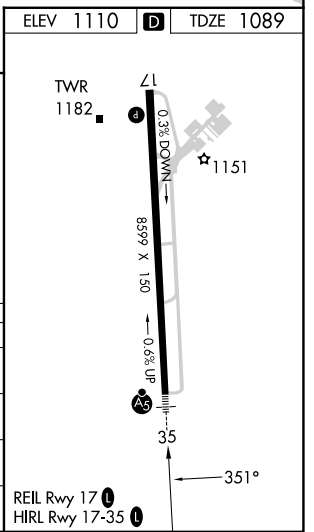
# RNAV (GPS) RWY 35

LAWTON-FORT SILL RGNL (LAW)

|  |  |   |  |                         |
|--|--|---|--|-------------------------|
| RNP APCH.<br>▼ For uncompensated Baro-VNAV systems, LNAV/VNAV NA below -11°C or above 54°C. For inop ALS, increase LNAV/VNAV all ASR<br>▲ Cats visibility to 7/8 SM. |  | MALSR<br>AS                                 | MISSED APPROACH: (Do not exceed 200K until WEGTE) Climb to 1520 then climbing left turn to 2700 direct WEGTE and hold. |                         |
| ATIS<br><b>120.75</b>  | FORT SILL APP CON<br><b>120.55 322.4</b> | LAWTON TOWER *<br><b>119.9 (CTAF) 257.8</b> | GND CON<br><b>121.9</b>  | UNICOM<br><b>122.95</b> |



| CATEGORY     | A        | B             | C                     | D                             |
|--------------|----------|---------------|-----------------------|-------------------------------|
| LPV DA       |          | 1289-1/2      | 200 (200-1/2)         |                               |
| LNAV/VNAV DA |          | 1376-1/2      | 287 (300-1/2)         |                               |
| LNAV MDA     | 1520-1/2 | 431 (500-1/2) | 1520-3/4              | 431 (500-3/4)                 |
| CIRCLING     | 1620-1   | 510 (600-1)   | 1820-2<br>710 (800-2) | 1820-2 1/4<br>710 (800-2 1/4) |



SC-1, 15 MAY 2025 to 12 JUN 2025

SC-1, 15 MAY 2025 to 12 JUN 2025