

GROVE, OKLAHOMA

AL-6721 (FAA)

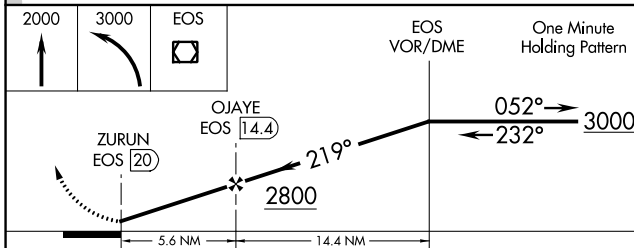
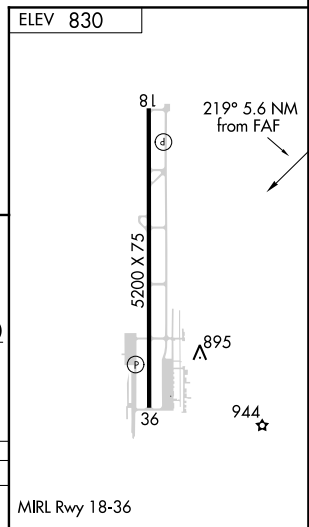
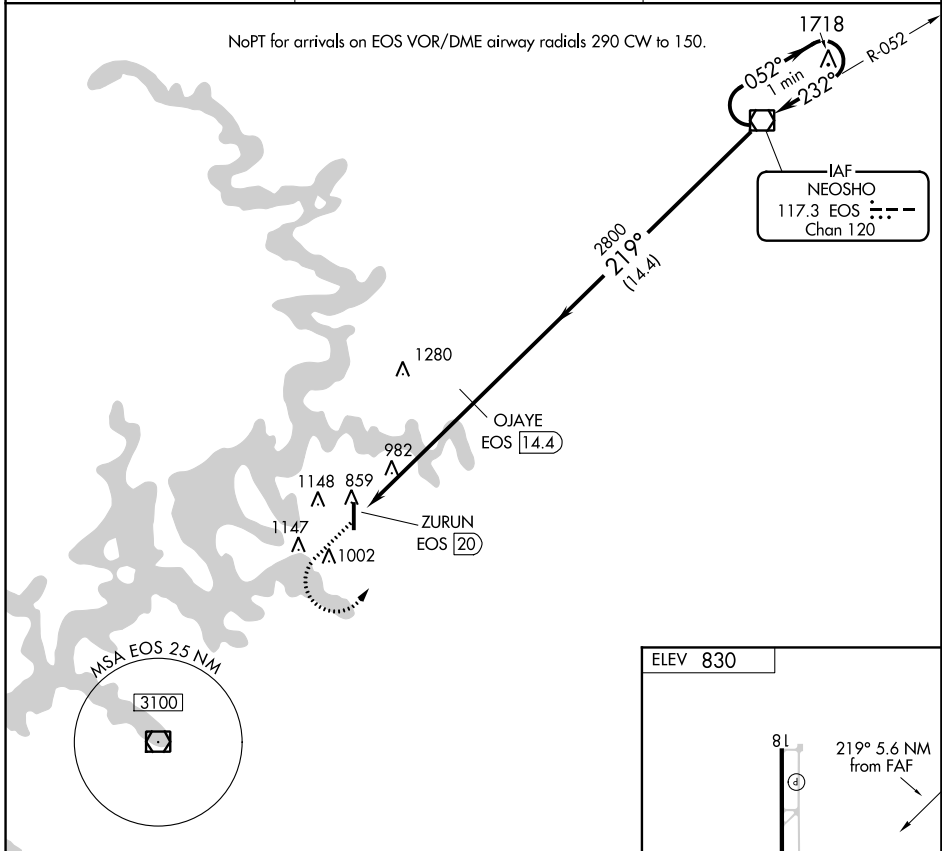
17229

VOR/DME EOS <b>117.3</b> Chan <b>120</b>	APP CRS <b>219°</b>	Rwy Idg TDZE Apt Elev	<b>N/A</b> <b>N/A</b> <b>830</b>
--	------------------------	-----------------------------	--

VOR/DME-A  
GROVE MUNI (GMJ)

MISSED APPROACH: Climb to 2000 then climbing left turn to 3000 direct EOS VOR/DME and hold.

AWOS-3 <b>119.025</b>	KANSAS CITY CENTER <b>128.8 354.1</b>	UNICOM <b>122.8</b> (CTAF)
--------------------------	--	-------------------------------



CATEGORY	A	B	C	D
CIRCLING	1500-1 670 (700-1)	1500-1¼ 670 (700-1¼)	1500-1¾ 670 (700-1¾)	NA

MIRL Rwy 18-36

SC-1, 01 MAR 2018 to 29 MAR 2018

SC-1, 01 MAR 2018 to 29 MAR 2018

GROVE, OKLAHOMA  
Amdt 1 12MAY05

36°36'N-94°44'W

GROVE MUNI (GMJ)  
VOR/DME-A