

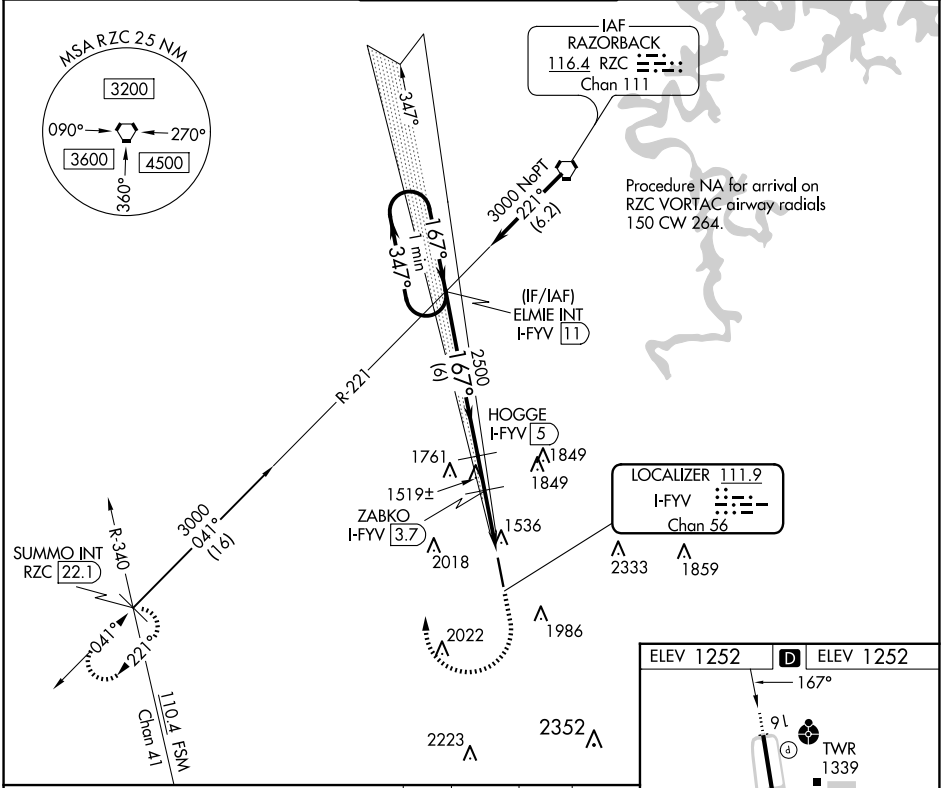
LOC/DME I-FYV 111.9 Chan 56	APP CRS 167°	Rwy Idg TDZE 1252 Apt Elev 1252
---	------------------------	---

LOC RWY 16

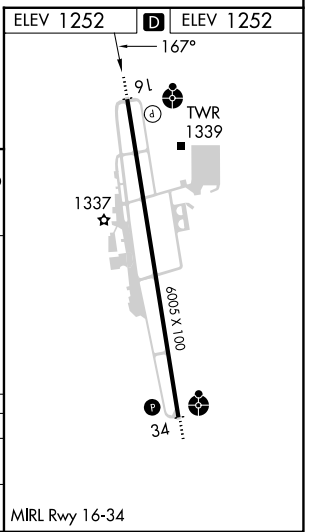
DRAKE FLD (FYV)

⚠ Circling NA east of Rwy 16-34. Rwy 16 helicopter visibility reduction below 3/4 SM NA. DME required.	ODALS 	MISSED APPROACH: Climb to 2100 then climbing right turn to 4000 on heading 295° and RZC VORTAC R-221 to SUMMO INT/RZC 22.1 DME and hold.
---	------------------	---

ATIS 119.575	RAZORBACK APP CON* 121.0 244.575	DRAKE TOWER* 128.0 (CTAF) 371.9	GND CON 121.8	UNICOM 122.95
-------------------------------	---	--	--------------------------------	--------------------------------



One Minute Holding Pattern	ELMIE INT I-FYV 11	HOGGE I-FYV 5	ZABKO I-FYV 3.7	I-FYV 2.7	I-FYV 1.2
3000	2500	2080	2100	4000	RZC SUMMO INT
← 347°	→ 167°	→ 167°	→ 3.00° TCH 50	hdg 295°	
6 NM		1.3 NM	1	1.5	
CATEGORY	A	B	C	D	
S-LOC 16	1780-3/4	528 (600-3/4)	1780-13/8	528 (600-13/8)	
C CIRCLING	2000-1	748 (800-1)	2320-3 1068 (1100-3)	2340-3 1088 (1100-3)	



SC-1, 15 MAY 2025 to 12 JUN 2025

SC-1, 15 MAY 2025 to 12 JUN 2025