

HI-VOR or TACAN RWY 17R

VORTAC BFV 110.0 Chan 37	APCH CRS 177°	Rwy Idg 13,503 TDZE 1922 Arprt Elev 1922
--	-------------------------	---

[USAF]

CLINTON-SHERMAN (KCSM)

DME required

* Circling not authorized E of Rwy 17R-35L.

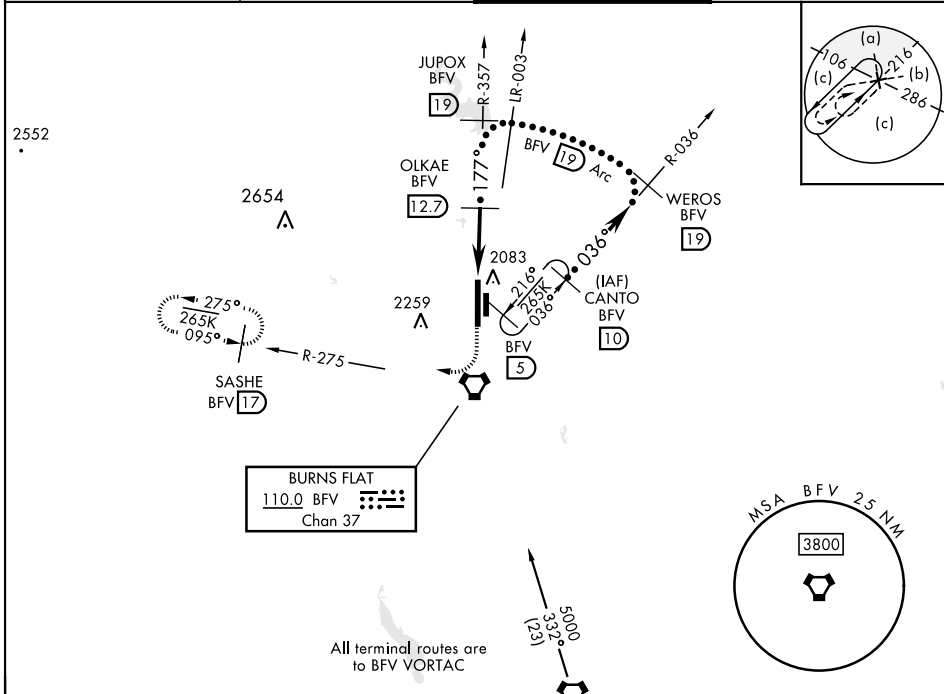
MISSED APPROACH: Climb to 3000 then climbing right turn to 5000 via heading 220° and BFV R-275 to SASHE/17 DME and hold.

ASOS
118.45

FORT WORTH CENTER
128.4 269.375

TOWER ★
119.6 (CTAF) 0 256.9

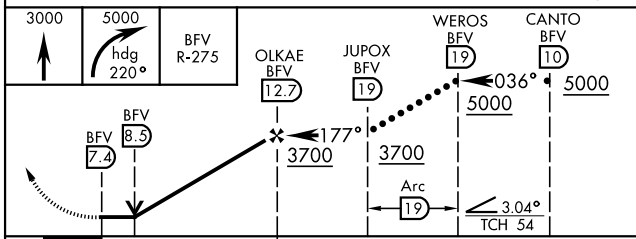
GND CON
121.7 239.0



SC-1, 07 AUG 2025 to 04 SEP 2025

SC-1, 07 AUG 2025 to 04 SEP 2025

EMERG SAFE ALT 100 NM 5000



ELEV	1922	TDZE	1922
177°			
17R			
2083			
1995			
★ TWR 1985			
17L			
35R			
35L			
13,503 x 200			
5193 x 275			
HIRL Rwy 17R-35L 0			

BURNS FLAT, OKLAHOMA

35° 20'N-99° 12'W

CLINTON-SHERMAN (KCSM)

Amtd 3 25FEB21

HI-VOR or TACAN RWY 17R