

WAAS CH 62942 W17A	APP CRS 177°	Rwy Idg TDZE Apt Elev	4400 1274 1274
--	------------------------	-----------------------------	---

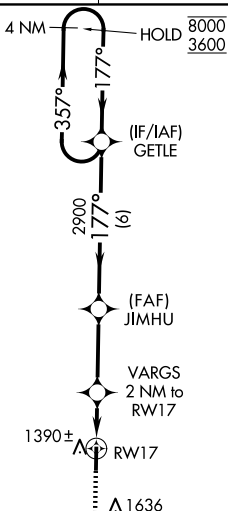
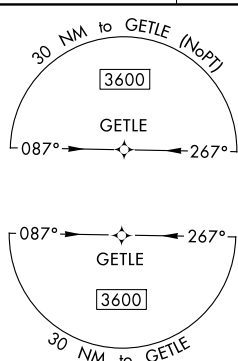
RNAV (GPS) RWY 17

FAIRVIEW MUNI (6K4)

RNP APCH. **NA** Circling Rwy 35 NA at night. Rwy 17 helicopter visibility reduction below 3/4 SM NA. Baro-VNAV NA. Use Vance AFB altimeter setting; when not received, use Watonga altimeter setting; increase LPV DA to 1622 feet and all visibilities 1/4 SM; increase LNAV/VNAV DA to 1678 feet and all visibilities 1/4 SM; increase all MDA 40 feet.

MISSED APPROACH: Climb to 3600 direct CINOL and hold.

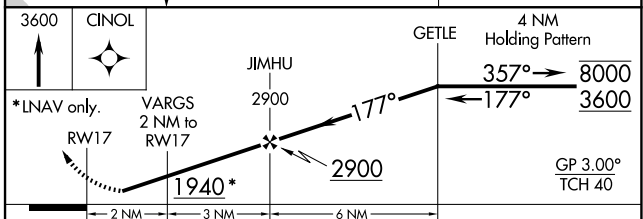
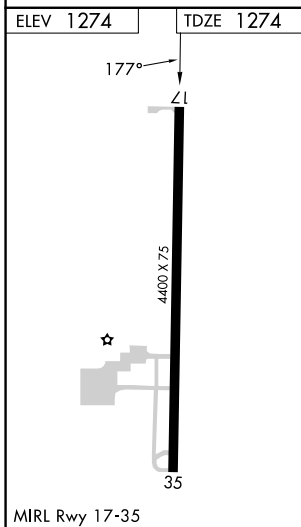
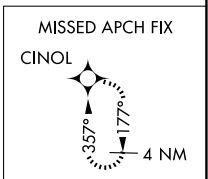
AWOS-3PT 120.0	KEND ATIS ★ 115.4 263.15	VANCE APP CON ★ 126.75 346.325	UNICOM 122.8 (CTAF)
--------------------------	------------------------------------	--	-------------------------------



▲ 1951

▲ 2191

▲ 2240



CATEGORY	A	B	C	D
LPV DA	1592-1 318 (400-1)			
LNAV/VNAV DA	1648-1 374 (400-1)			
LNAV MDA	1720-1	446 (500-1)	1720-1 3/8	446 (500-1 3/8)
<input checked="" type="checkbox"/> CIRCLING	1840-1 566 (600-1)	2020-1 746 (800-1)	2020-2 1/4 746 (800-2 1/4)	2180-3 906 (1000-3)

SC-1, 15 MAY 2025 to 12 JUN 2025

SC-1, 15 MAY 2025 to 12 JUN 2025