

WAAS CH 62838 W05A	APP CRS 051°	Rwy Idg TDZE Apt Elev	4003 954 964
--	------------------------	-----------------------------	---

RNAV (GPS) RWY 5

SEARCY COUNTY (4A.5)

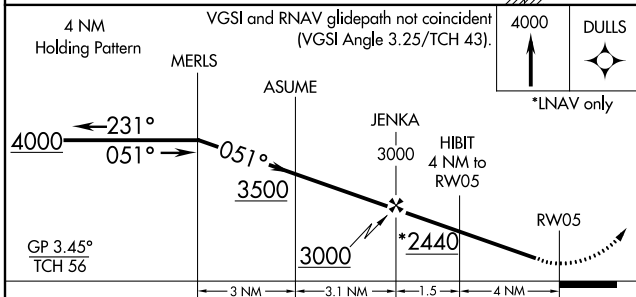
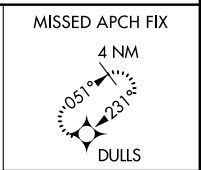
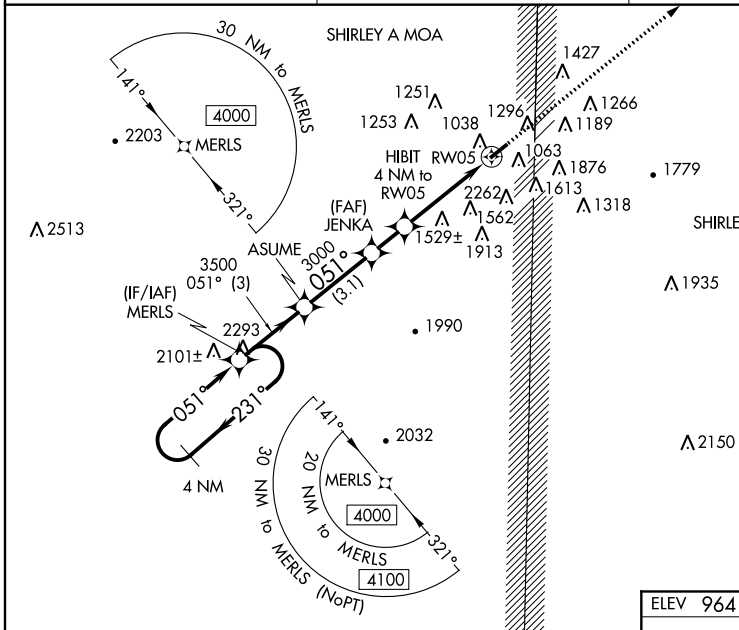
▽ DME/DME RNP-0.3 NA. Circling NA SE of Rwy 5-23. Night Landing: Rwy 23 NA.
△NA Baro-VNAV NA. Use Flippin altimeter setting; when not received, use Harrison altimeter setting and increase all Cats LPV DA to 1396 and visibility 1/2 mile, LNAV/VNAV all Cats DA to 1981, and all MDA 60 feet. Helicopter visibility reduction below 3/4 SM NA.

MISSED APPROACH:
Climb to 4000 direct DULLS and hold.

FLIPPIN AWOS-3
132.075

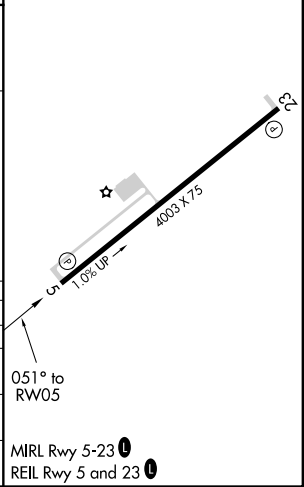
MEMPHIS CENTER
126.85 281.55

CTAF
122.9



ELEV 964	TDZE 954
----------	----------

CATEGORY	A	B	C	D
LPV DA	1353-1¼	399 (400-1¼)		NA
LNAV/VNAV DA	1938-3	984 (1000-3)		NA
LNAV MDA	1920-1¼ 966 (1000-1¼)	1920-1½ 966 (1000-1½)	1920-3 966 (1000-3)	NA
CIRCLING	1920-1¼ 956 (1000-1¼)	1920-1½ 956 (1000-1½)	1920-3 956 (1000-3)	NA



SC-1, 08 NOV 2018 to 06 DEC 2018

SC-1, 08 NOV 2018 to 06 DEC 2018